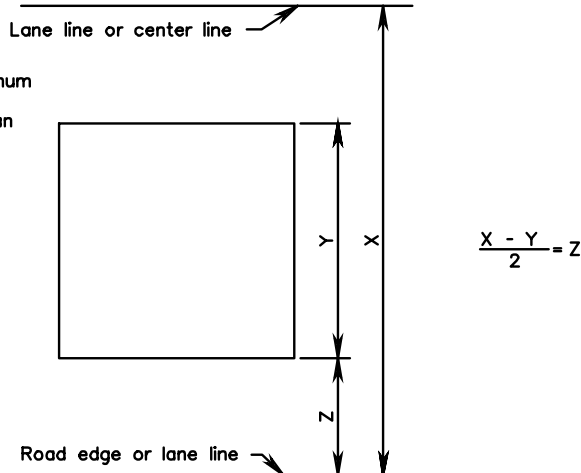
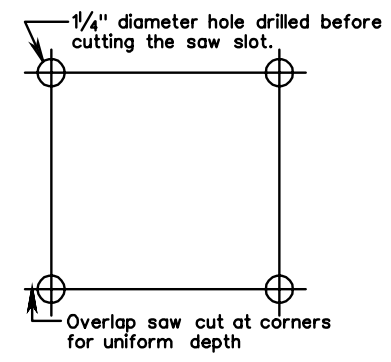


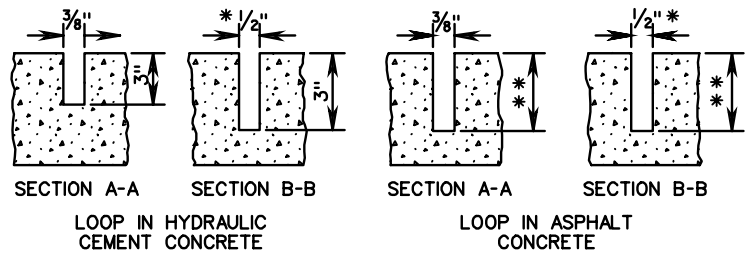
TYPICAL LOOP WIRE PLAN



TYPICAL LANE COVERAGE DIAGRAM



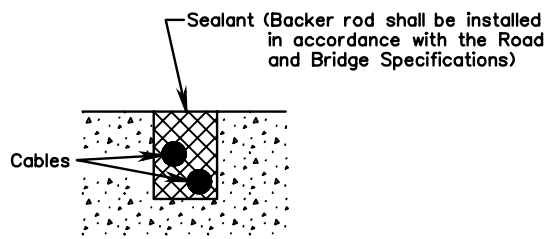
TYPICAL SAW CUT DIAGRAM



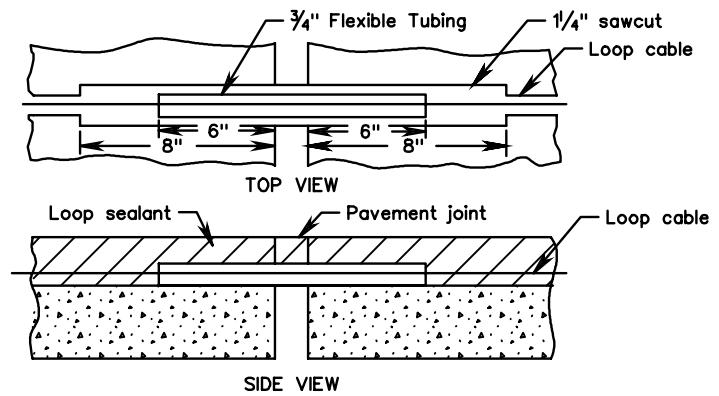
- * Saw slot shall be 5/8" when loop detector cable enclosed in tubing is installed.
- In new asphalt concrete roadways, saw slots shall be cut into the base course to a depth of 3".
- In existing asphalt concrete roadways which are to be planned, saw slots shall be cut into the post planned surface to a depth of 3".
- ** In existing asphalt concrete roadways which are not to be planned, saw slots shall be cut into the existing surface to a depth of 4".

Depth of saw cut shall be measured from pavement surface at time of installation. Not necessarily finished grade.

TYPICAL SAW SLOT DETAIL



CROSS SECTION TYPICAL SEALED SLOT



INSTALLATION OF LOOP CABLE ACROSS HYDRAULIC CEMENT CONCRETE PAVEMENT JOINTS

LOOP DETECTOR INSTALLATION DETAILS