

DETAILS OF SPAN WIRING AND RIGGING

**Notes:**

Concrete pad required when cabinet mounted on pole in earth areas.  
See Standard CTE-1 for pad detail.

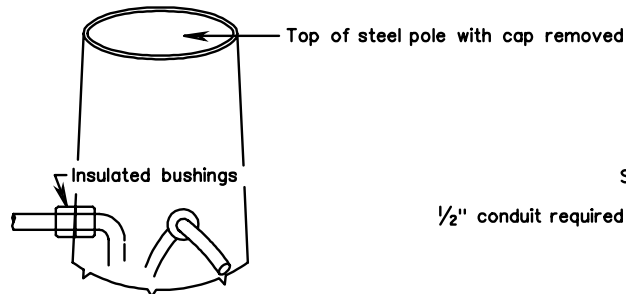
For methods approved for cable runs, see Standard WD-2.

Pole height designed to accommodate attaching span across the greatest distance at a point 18" from the top of the pole. Spans crossing a lesser distance and attached to the same pole shall be attached lower than 18" as will result in the lowest signalhead section maintaining the minimum clearance, using no extensions as shown by Standard SW-1 and SW-2.

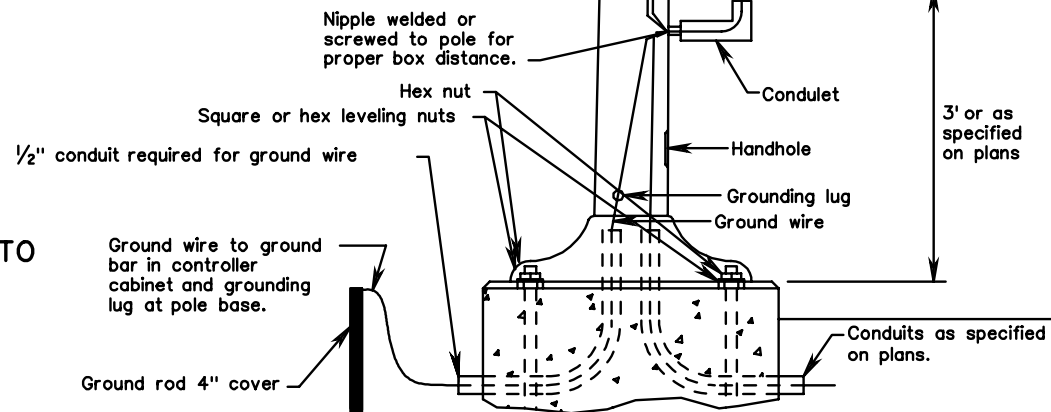
A strain insulator(s) may be used to extend the length of existing span wire if a span pull is to be modified.

Signal cable shall be run inside unless otherwise specified

DETAILS OF POLE RIGGING



METHODS OF BRINGING CONDUCTORS INTO TOP OF STEEL POLES



DETAILS OF STEEL POLE BASE WITH CONTROLLER CABINET AND METHODS OF BRINGING IN CONDUCTORS

**STEEL POLE WIRING AND RIGGING  
DETAILS**