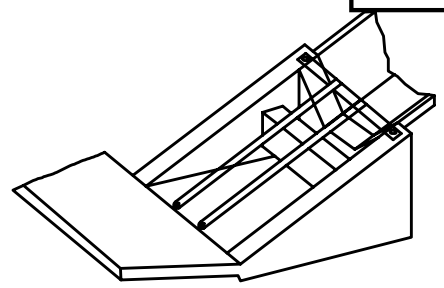
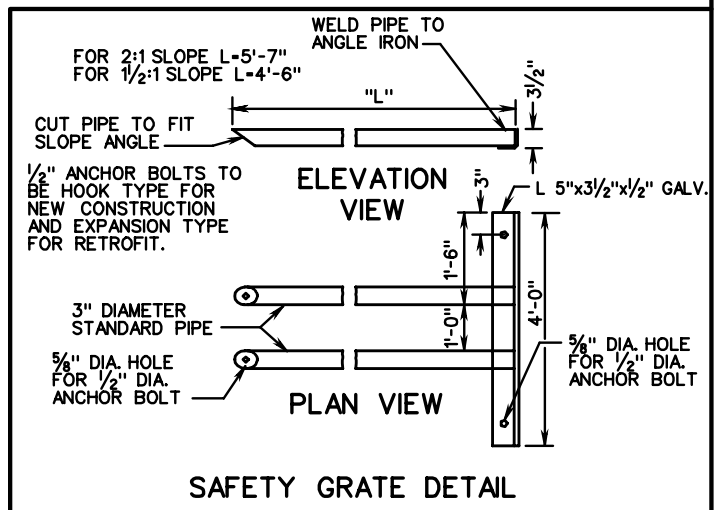
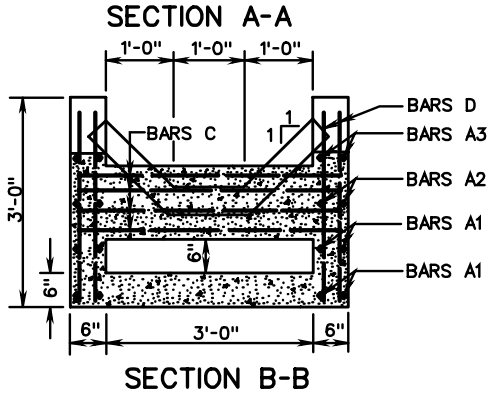
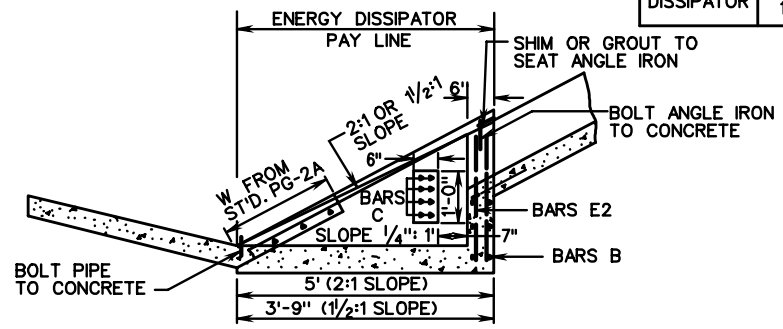


NOTES:
 AMOUNT OF PAVED DITCH REPLACED BY "ENERGY DISSIPATOR" TABULATED BY DEPTHS AS SHOWN IN STANDARD PG-2A.
 THIS ITEM MAY BE PRECAST OR CAST IN PLACE.
 CONCRETE TO BE CLASS A3 IF CAST IN PLACE.
 FOR PRECAST SEE SHEET 111.02.
 THE 2:1 DESIGN MAY BE USED ON EITHER 1/2:1 OR 2:1 SLOPES.
 EG-1-ENERGY DISSIPATOR WITHOUT GRATE.
 EG-1A-ENERGY DISSIPATOR WITH GRATE.



| APPROXIMATE QUANTITIES | | | |
|------------------------|-------|----------|-------------------|
| | | CONCRETE | REINFORCING STEEL |
| | | CU. YDS. | LBS. |
| ENERGY DISSIPATOR | 2:1 | 0.7479 | 61.20 |
| | 1/2:1 | 0.5921 | 57.63 |

| SCHEDULE OF REINFORCING STEEL | | | | | | |
|-------------------------------|-----|------------|------------|------|-------------|----------|
| MARK | NO. | LENGTH | | SIZE | SPACING C-C | SHAPE |
| | | 2:1 | 1 1/2:1 | | | |
| A1 | 8 | 2'-10" | 2'-10" | # 3 | 8" | STRAIGHT |
| A2 | 4 | 2'-6 1/4" | 1'-10" | # 3 | 8" | STRAIGHT |
| A3 | 4 | 1'-0 3/4" | 0'-10" | # 3 | 8" | STRAIGHT |
| B | 6 | 3'-9" | 3'-9" | # 3 | 8" | STRAIGHT |
| C | 8 | 3'-8" | 3'-8" | # 4 | 2 1/2" | STRAIGHT |
| D1 | 4 | 1'-2 1/2" | 0'-8" | # 3 | 8" | STRAIGHT |
| D2 | 4 | 1'-6 1/2" | 1'-1 1/2" | # 3 | 8" | STRAIGHT |
| D3 | 4 | 1'-10 1/2" | 1'-7" | # 3 | 8" | STRAIGHT |
| D4 | 4 | 2'-2 1/2" | 2'-0 1/2" | # 3 | 8" | STRAIGHT |
| D5 | 4 | 2'-6 1/2" | 2'-6" | # 3 | 8" | STRAIGHT |
| E1 | 4 | 1'-11 1/2" | 1'-11 1/2" | # 3 | 8" | STRAIGHT |
| E2 | 4 | 1'-5 1/2" | 1'-5 1/2" | # 3 | 8" | STRAIGHT |



| |
|-------------------------|
| SPECIFICATION REFERENCE |
| 502 |

STANDARD ENERGY DISSIPATOR FOR USE WITH PAVED FLUMED