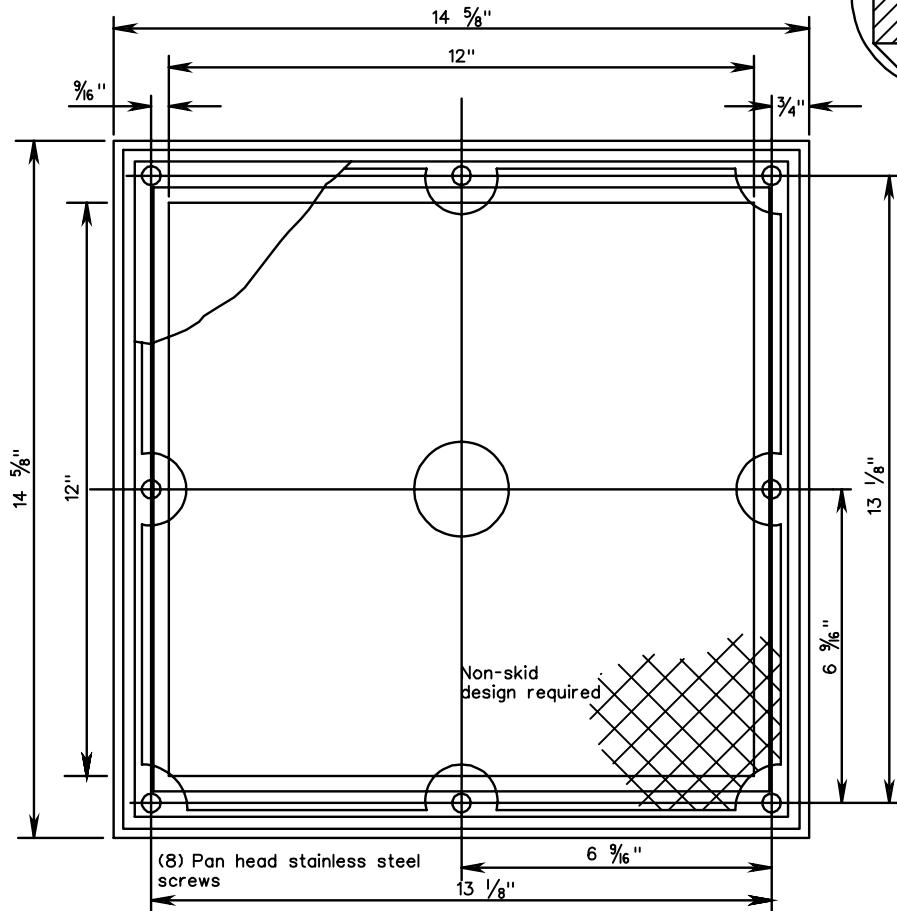


TOP VIEW



**Notes:**

Finish: Galvanized in accordance with Section 233 and coated (outside) except the cover with an approved mastic.  
 Material: Box 1/4" steelplate & cover 1" steelplate ASTM-A36M.

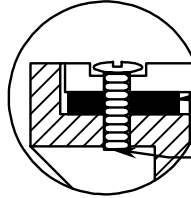
All junction boxes shall be installed with a ground rod unless box houses only communication/interconnect cable.

PVC conduits shall have bell ends and metal conduits shall have grounding bushings on all ends.

Bellends and bushings shall be plugged to prevent moisture and rodent entry.

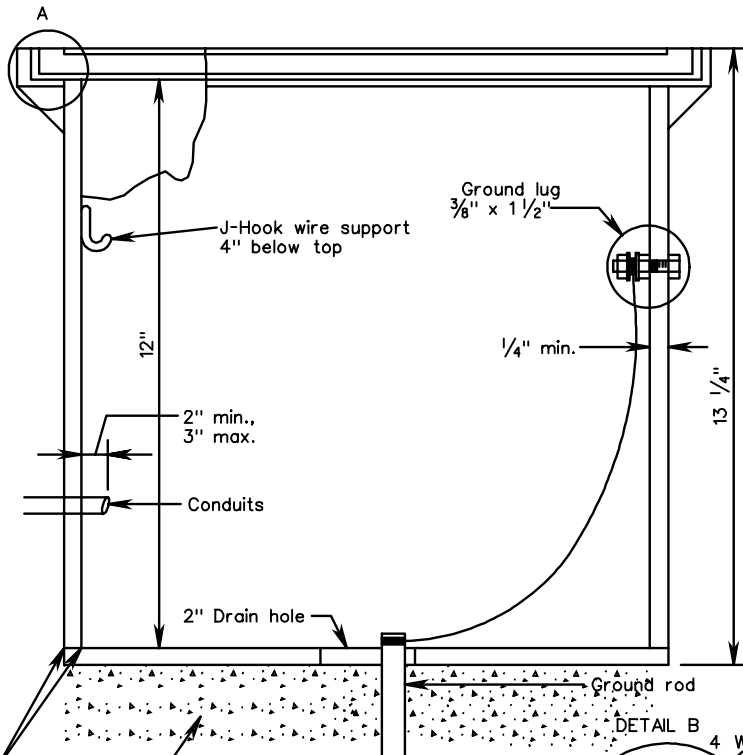
Voids resulting from entrance of conduits into junction boxes shall be completely filled with an appropriate material.

DETAIL A



When setting box in concrete, cover with set screws shall be in place.

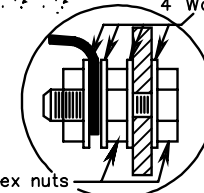
SIDE VIEW



All seams shall have two continuous electrical arc-welds.

#68, #78, #8 aggregate or crushed glass meeting #78 or #8 gradation requirements. 12" sq. x 24" depth (dimensions vary according to detail "A")

DETAIL B



Grounding lug galvanized bolt ASTM-A307

**JUNCTION BOX**