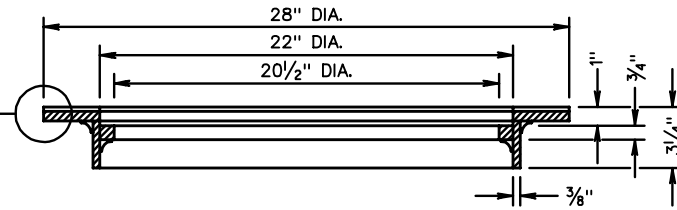
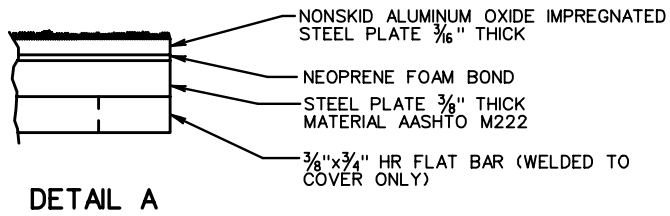


INLET COVER

SEE  
DETAIL A



SECTION C-C  
INLET FRAME



DETAIL A

**NOTES**

1. STRUCTURAL COMPONENTS SHALL CONFORM TO AASHTO M222.
2. FRAME AND COVER SHALL HAVE A CONTINUOUS FLASH FIT.
3. DUMP NO WASTE DRAINS TO WATERWAYS LETTERING IS REQUIRED ON ALL IC-2 COVERS.

**STANDARD INLET AND FRAME COVER**