

**NOTES:**

LOCAL POWER UTILITY POWER COMPANY WILL INSTALL SERVICE CABLE FROM THEIR POWER SOURCE TO THE JUNCTION BOX AND MAKE REQUIRED SPLICES TO THE SERVICE CABLE COILED IN THE JUNCTION BOX.

NO OTHER CONDUCTORS SHALL BE RUN IN THE SAME CONDUIT WITH ELECTRICAL SERVICE CABLE.

CONCRETE PAD SHALL BE INSTALLED IN FRONT OF CABINET DOORS, SIZED TO MATCH THE FOUNDATION WIDTH, AND SLOPED TO DRAIN (MIN. 20" W BY 36" L, 4" DEPTH)

GROUNDING BUSHINGS SHALL BE INSTALLED ON EACH END OF METAL CONDUITS.

EMPTY CONDUITS SHALL BE PLUGGED TO PREVENT MOISTURE AND RODENT ENTRY.

OPEN ENDS OF CONDUITS WITH CONDUCTORS INSTALLED SHALL BE SEALED WITH AN APPROVED SOFT, PLIABLE, AND EASILY REMOVABLE WATERPROOF SEALANT. THE SEALANT SHALL NOT HAVE A DELETERIOUS EFFECT ON CABLE COVERINGS.

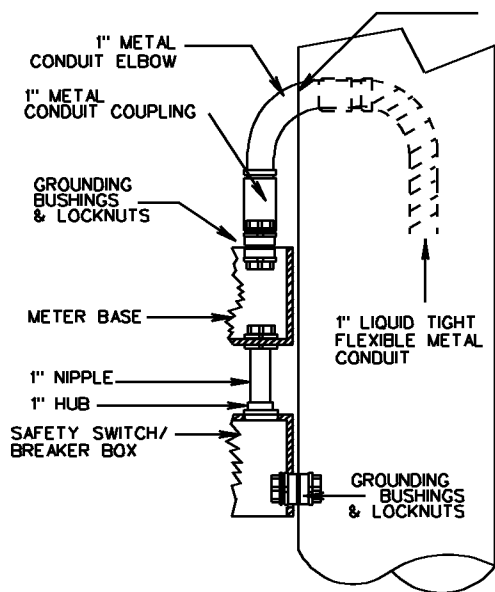
LOCAL POWER UTILITY COMPANY WILL INSTALL SERVICE POWER UTILITY CABLE FROM THEIR POWER SOURCE TO THE JUNCTION BOX AND MAKE REQUIRED SPLICES TO THE SERVICE CABLE COILED IN THE JUNCTION BOX.

BELL ENDS SHALL BE INSTALLED ON EACH END OF PVC CONDUITS.

THIS STANDARD IS APPLICABLE FOR ALL ELECTRICAL SERVICES OTHER THAN 480Y/277.

POLE HEIGHT AND SIZE WILL BE AS SPECIFIED ON THE PLANS.

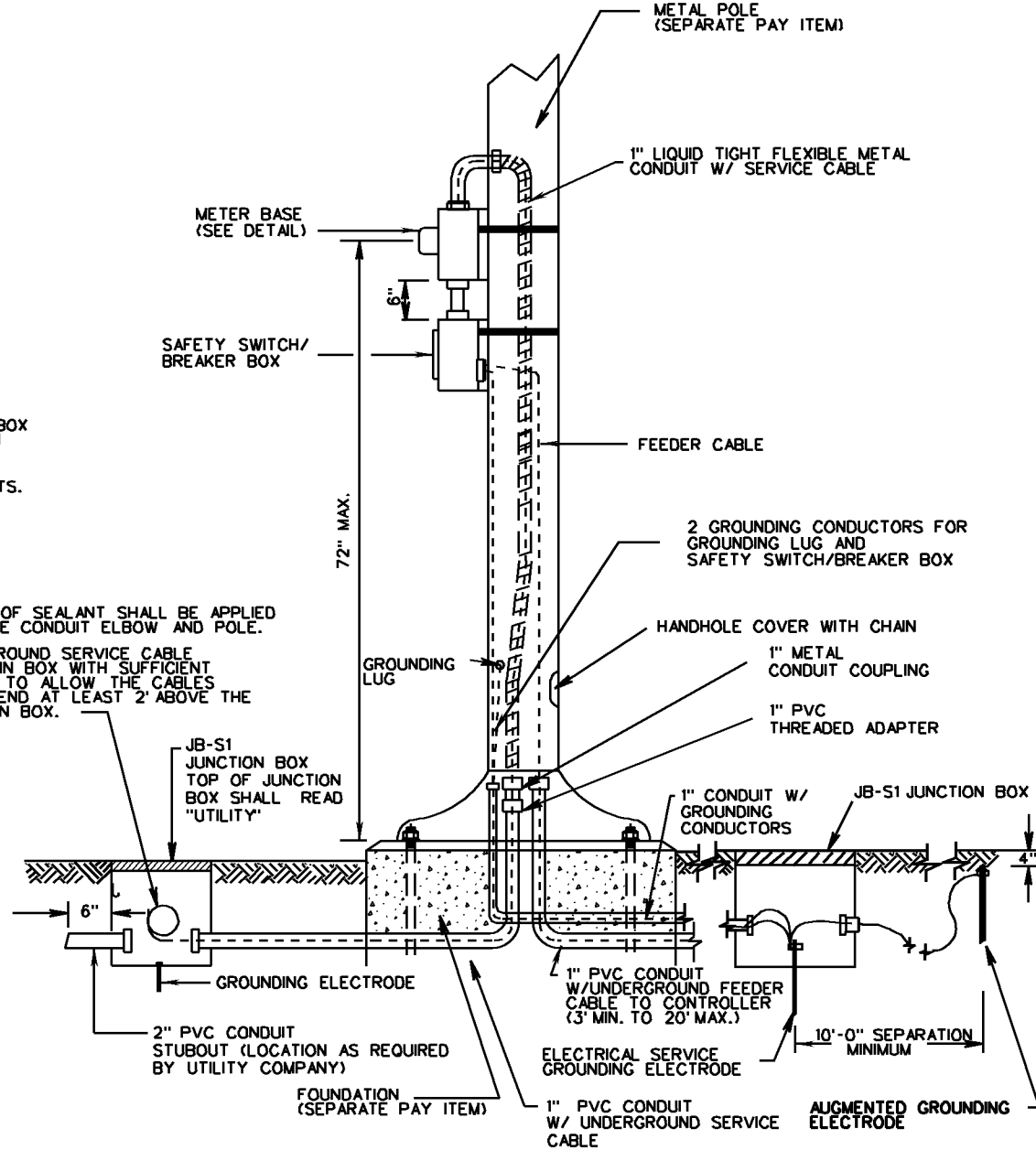
REFER TO STANDARD MP-2 FOR GROUNDING LUG DETAIL.



**DETAIL FOR CONNECTION OF CONDUIT TO METER BASE**

A WATERPROOF SEALANT SHALL BE APPLIED BETWEEN THE CONDUIT ELBOW AND POLE.

UNDERGROUND SERVICE CABLE COILED IN BOX WITH SUFFICIENT LENGTH TO ALLOW THE CABLES TO EXTEND AT LEAST 2' ABOVE THE JUNCTION BOX.



**TYPE B (UNDERGROUND SERVICE) METAL POLE**

<b>VDOT</b>	
ROAD AND BRIDGE STANDARDS	
SHEET 2 OF 2	REVISION DATE
1312.31	

**ELECTRICAL SERVICE  
INSTALLATION DETAILS**  
VIRGINIA DEPARTMENT OF TRANSPORTATION

SPECIFICATION REFERENCE
700