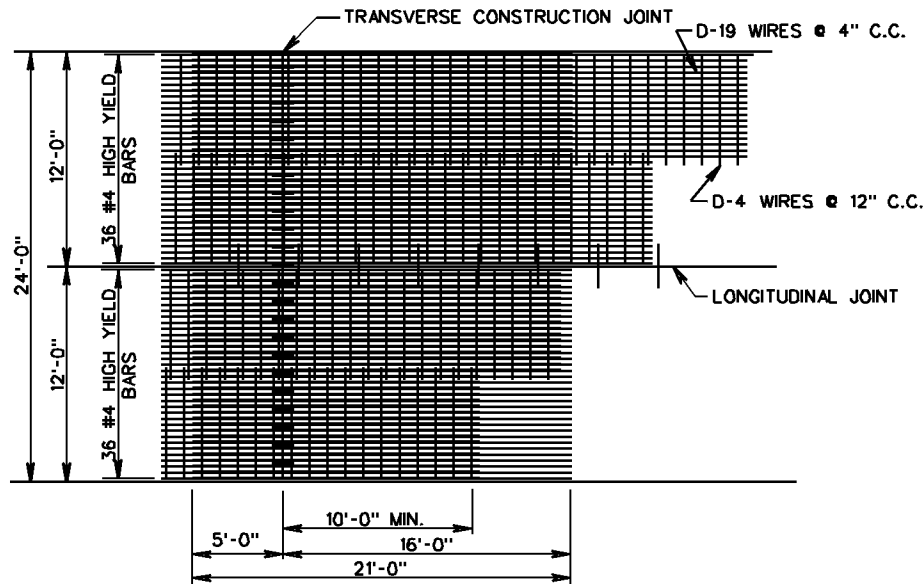


\* LONGITUDINAL STEEL TO CONTINUE THROUGH JOINT.

EXTRA # 5 (GRADE 60) BARS (21' LONG) SHALL BE SPACED AT 12" C.C.

LEAVE OUT JOINT  
FOR USE WITH STEEL BAR REINFORCEMENT



LEAVE OUT JOINT  
FOR USE WITH WIRE MESH REINFORCEMENT

SPECIFICATION  
REFERENCE

316

# 8" THICK CONTINUOUSLY REINFORCED CONC. PAVE.

(LEAVE OUT JOINT DETAIL)

VIRGINIA DEPARTMENT OF TRANSPORTATION

VDOT

ROAD AND BRIDGE STANDARDS

REVISION DATE

4/09

SHEET 4 OF 4

301.09