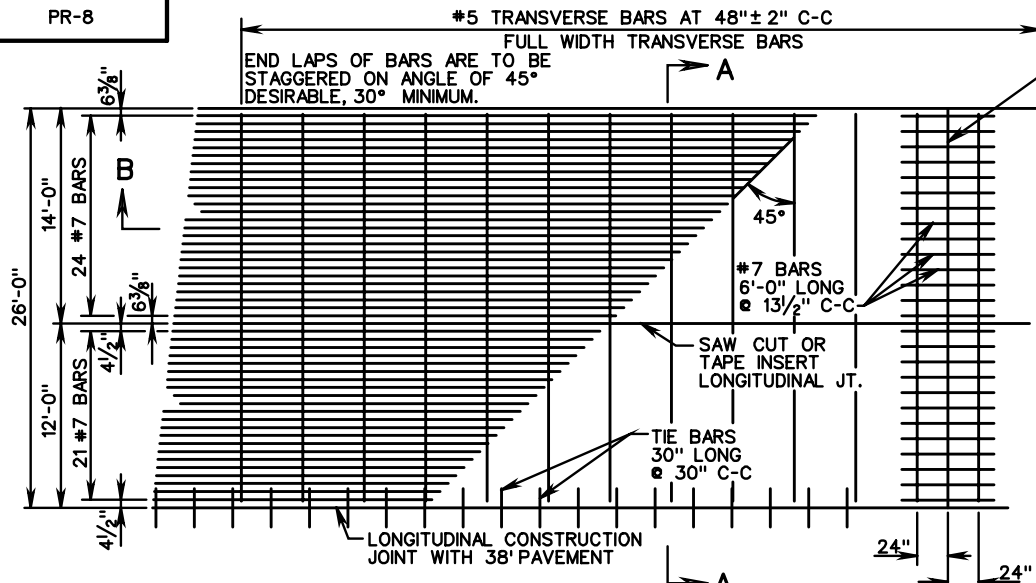
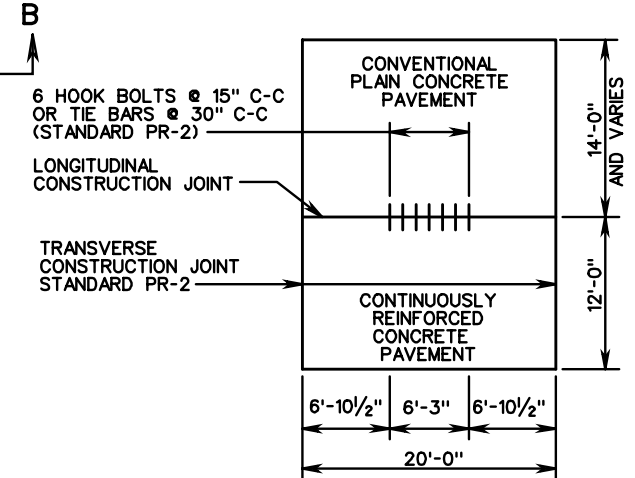


PR-8

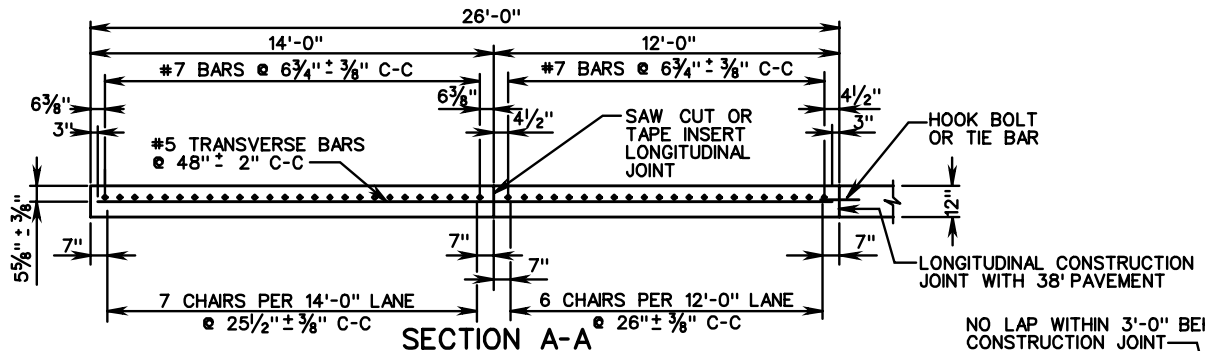


PLAN VIEW  
CONTINUOUSLY REINFORCED CONCRETE PAVEMENT

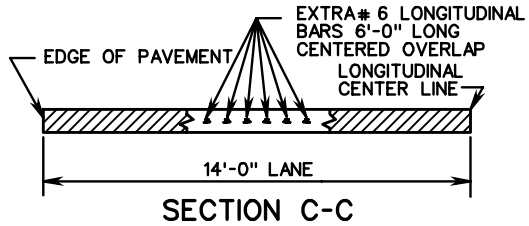
TRANSVERSE CONSTRUCTION JOINT. LONGITUDINAL STEEL TO CONTINUE THROUGH JOINT



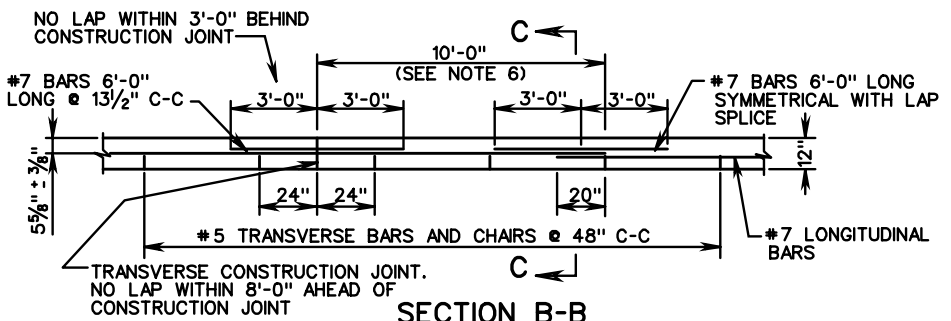
PLAN - RAMP AND MAIN LINE CONNECTION



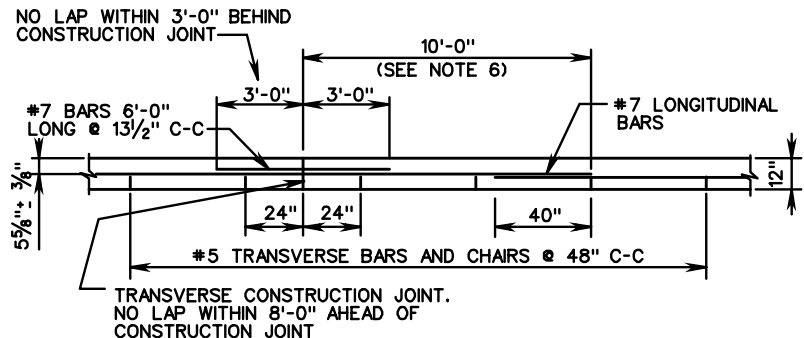
SECTION A-A



SECTION C-C



SECTION B-B  
EXTRA BAR METHOD



SECTION B-B  
DOUBLE LAP METHOD

SEE SHEET 3 OF 3 FOR NOTES

<b>VDOT</b>	
ROAD AND BRIDGE STANDARDS	
SHEET 1 OF 3	REVISION DATE
301.22	

**12" THICK CONTINUOUSLY REINFORCED CONC. PAVE.**  
(14' TRAVEL LANE)

VIRGINIA DEPARTMENT OF TRANSPORTATION

SPECIFICATION REFERENCE
316