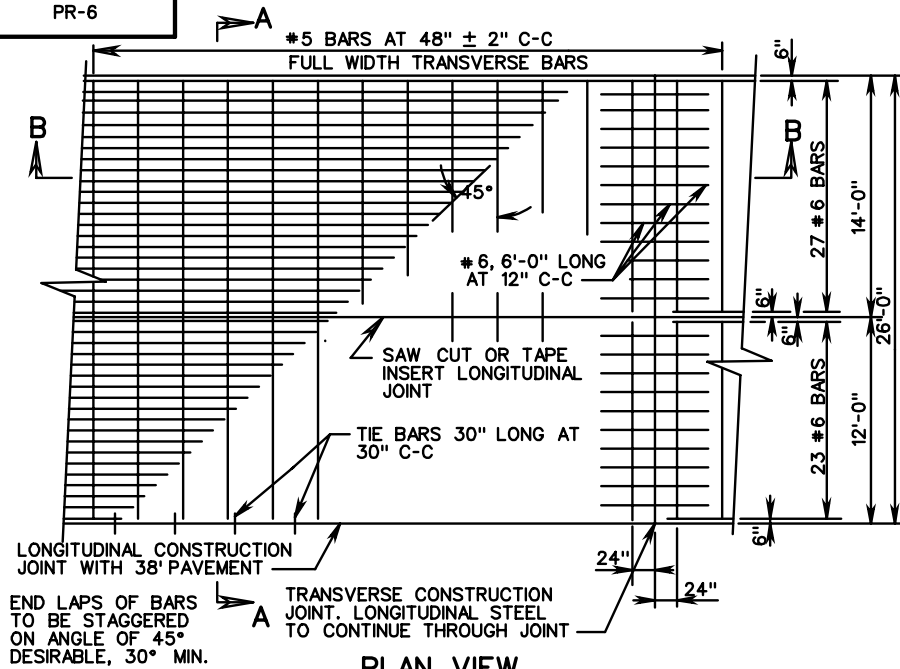
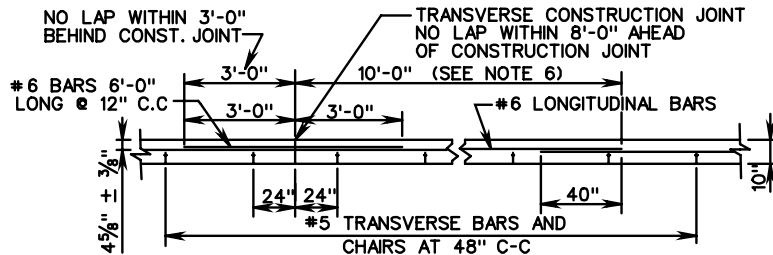


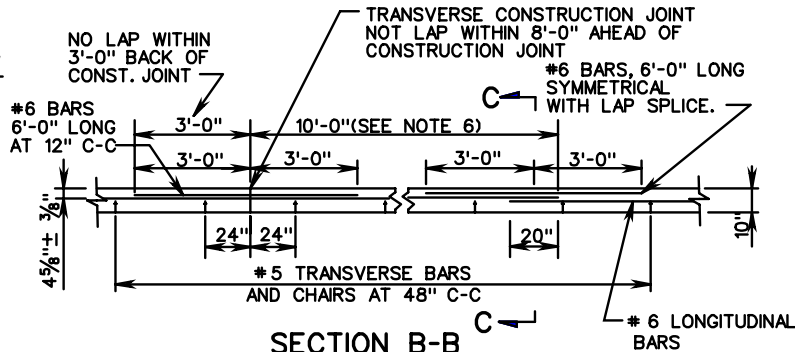
PR-6



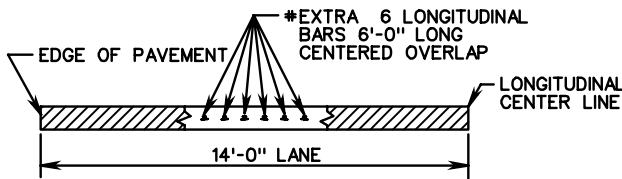
**PLAN VIEW
CONTINUOUSLY REINFORCED CONCRETE PAVEMENT**



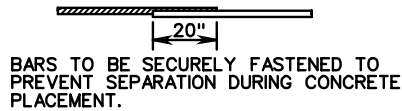
**SECTION B-B
DOUBLE LAP METHOD**



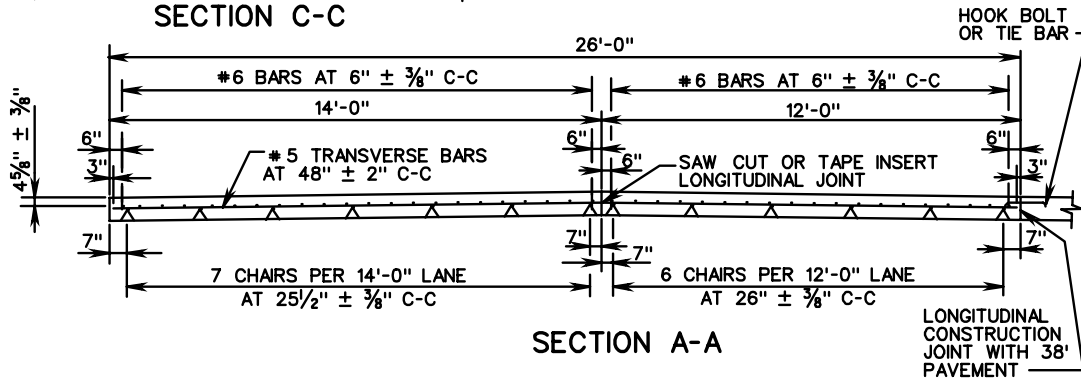
**SECTION B-B
EXTRA BAR METHOD**



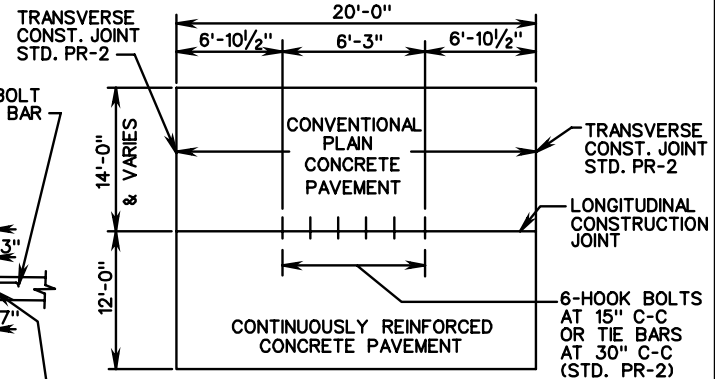
SECTION C-C



**TYPICAL
LONGITUDINAL LAP**



SECTION A-A



PLAN-RAMP & MAIN LINE CONNECTION

SEE SHEET 3 OF 3 FOR NOTES.



ROAD AND BRIDGE STANDARDS

SHEET 1 OF 3

REVISION DATE

301.16

**10" THICK CONTINUOUSLY REINFORCED CONC. PAVE.
(14 FOOT TRAVEL LANE)**

VIRGINIA DEPARTMENT OF TRANSPORTATION

SPECIFICATION
REFERENCE

316