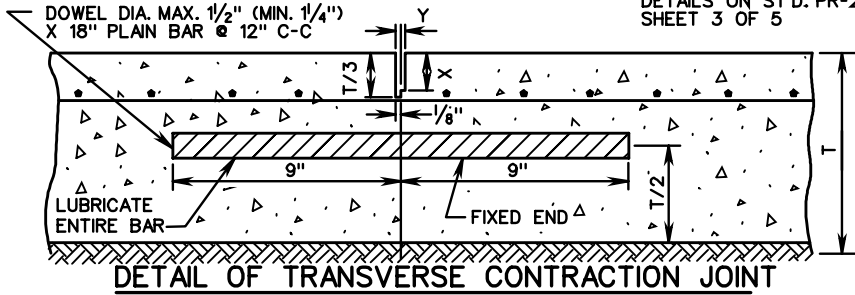


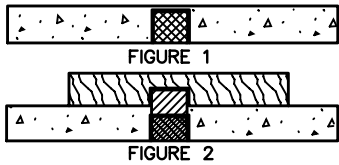
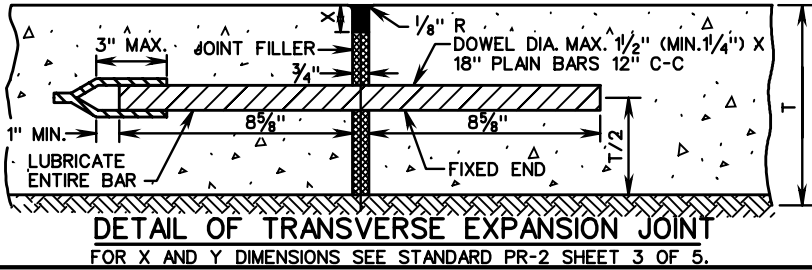
PR-2

FOR X AND Y DIM. SEE
ST'D. PR-2 SHEET 3 OF 5

⊗ JT. SEALANTS TO BE IN
ACCORDANCE WITH
DETAILS ON ST'D. PR-2
SHEET 3 OF 5



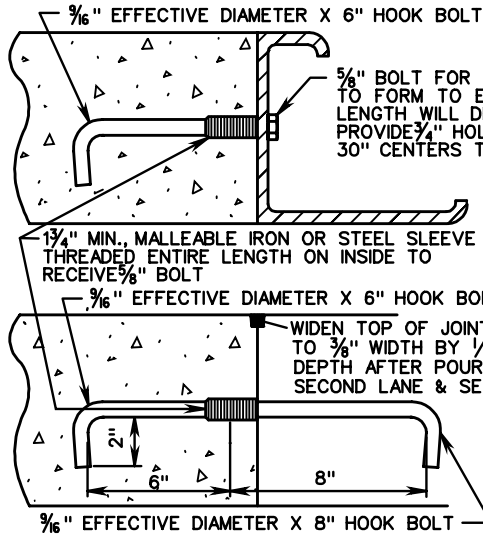
⊗ SEAL WITH AN APPROVED JOINT SEALANT. A BAND BREAKING
MATERIAL IS TO BE PROVIDED BETWEEN THE JOINT FILLER AND SEAL.



SMOOTH SURFACE TO BE STEEL TROWELED
8" IN FROM THE EDGE OF PAVEMENT
EVERY 500', AND STATION NUMBER STAMPED
INTO IT. THE DATE IS TO BE SHOWN IN A
SIMILAR MANNER AT THE BEGINNING OF EACH
DAY'S POUR.

**METHOD OF FINISHING
AT EXPANSION JOINTS**

BOTH OUTSIDE EDGES OF DIVIDED HIGHWAY TO
BE STAMPED. ONE EDGE OF UNDIVIDED HIGHWAYS
WHERE FEASIBLE.

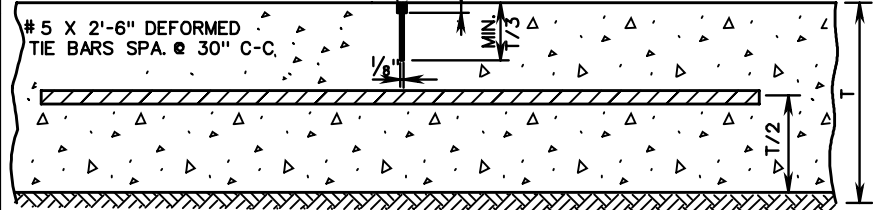


NOTE:
3/16" EFFECTIVE DIAMETER HOOK
BOLTS TO BE 3/16" DIAMETER
STOCK FOR ROLLED THREADS
AND 5/8" DIAMETER STOCK FOR
CUT THREADS O.D. OF THREADED
PORTION TO BE 5/8".
ANY SIMILAR DEVICE OF EQUAL
STRENGTH WILL BE ACCEPTED IF
APPROVED BY THE ENGINEER.

NOTE:
#5 X 2'-6" DEFORMED TIE BARS
AT 30" C-C MAY BE USED
IN LIEU OF HOOK BOLTS.

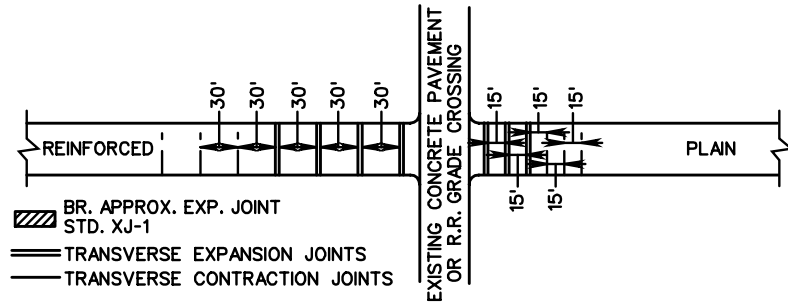
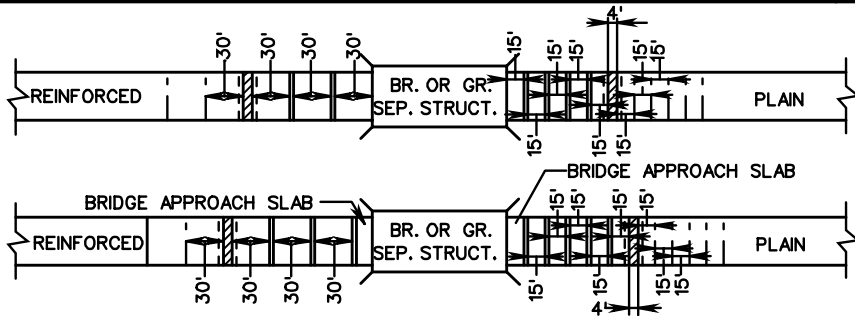
DETAIL OF LONGITUDINAL JOINT HOOK BOLTS
SHOWING PAVEMENT POURED IN SINGLE LANES

WIDEN TOP OF GROOVE TO 3/8"
WIDTH BY 1/2" DEPTH & SEAL
IF ASPHALT TOP NOT USED.



GRADE 40 TIE BARS MAY BE PRE-BENT AND STRAIGHTENED ONE TIME ONLY
FOR MULTI-LANE CONSTRUCTION IN ACCORDANCE WITH SPECIFICATIONS.

DETAIL OF LONGITUDINAL JOINT TIE BARS
SHOWING ADJACENT LANES POURED SIMULTANEOUSLY



▨ BR. APPROX. EXP. JOINT
STD. XJ-1
— TRANSVERSE EXPANSION JOINTS
— TRANSVERSE CONTRACTION JOINTS

DETAILS OF JOINTS LAYOUTS
(FOR USE WHEN COVERED ON JOINT LAYOUTS IN PLANS)



ROAD AND BRIDGE STANDARDS

SHEET 2 OF 5

REVISION DATE

301.02

PLAIN AND REINFORCED CONCRETE PAVEMENT
(SHOWING REINFORCEMENT, LONGITUDINAL AND TRANSVERSE JOINTS)

VIRGINIA DEPARTMENT OF TRANSPORTATION

SPECIFICATION
REFERENCE

316