

**NOTES:**

NO OTHER CONDUCTORS SHALL BE RUN IN THE SAME CONDUIT WITH ELECTRICAL SERVICE CABLE.

CONCRETE PAD REQUIRED WHEN CABINET MOUNTED ON POLE IN EARTH AREAS. (SEE STANDARD CF-1 FOR PAD DETAIL).

GROUNDING BUSHINGS SHALL BE INSTALLED ON EACH END OF METAL CONDUITS.

BELL ENDS SHALL BE INSTALLED ON EACH END OF PVC CONDUITS.

OPEN ENDS OF CONDUITS WITH CONDUCTORS INSTALLED SHALL BE SEALED WITH AN APPROVED SOFT PLIABLE, AND EASILY REMOVABLE WATERPROOF SEALANT. THE SEALANT SHALL NOT HAVE A DELETERIOUS EFFECT ON CABLE COVERINGS.

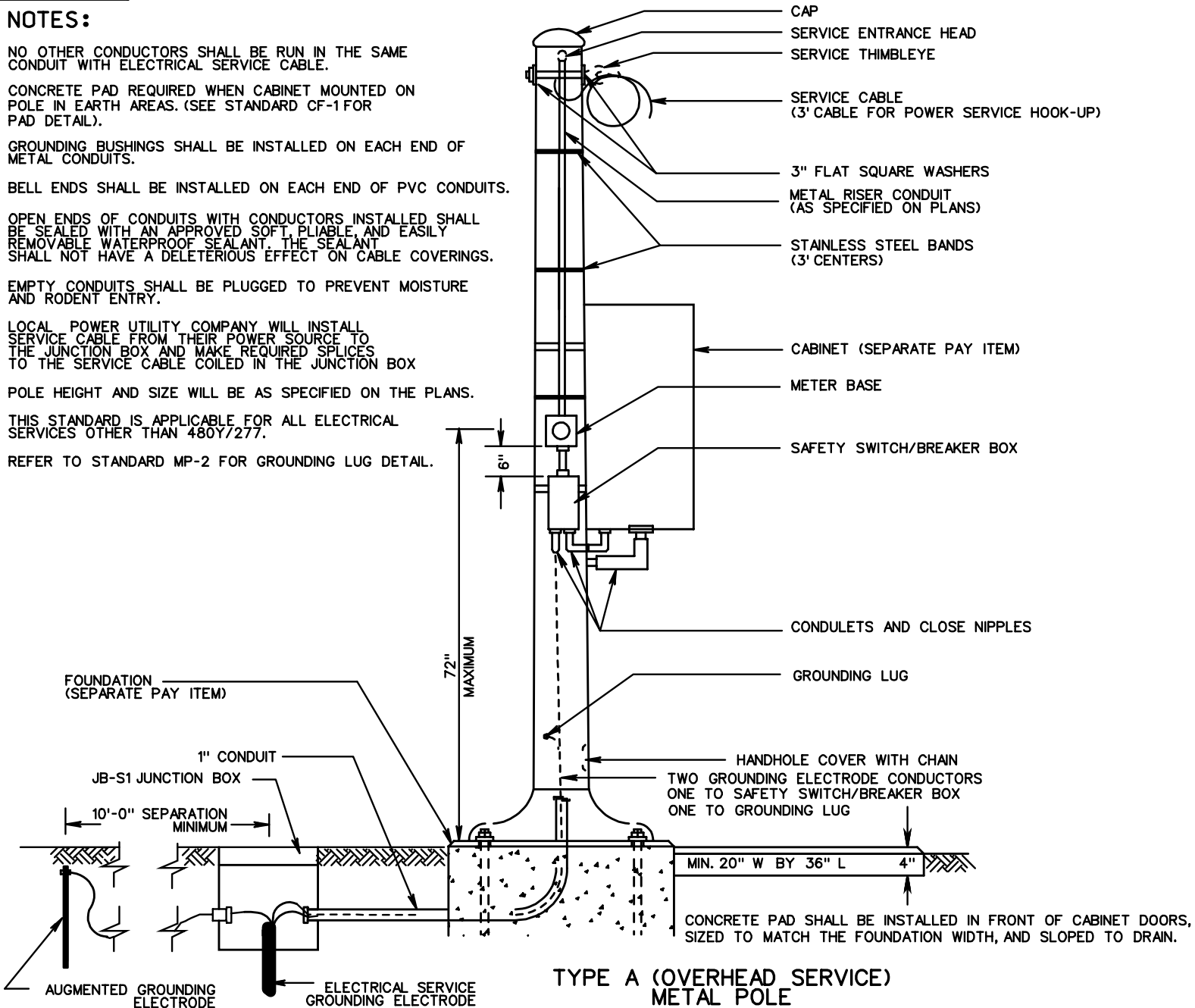
EMPTY CONDUITS SHALL BE PLUGGED TO PREVENT MOISTURE AND RODENT ENTRY.

LOCAL POWER UTILITY COMPANY WILL INSTALL SERVICE CABLE FROM THEIR POWER SOURCE TO THE JUNCTION BOX AND MAKE REQUIRED SPLICES TO THE SERVICE CABLE COILED IN THE JUNCTION BOX

POLE HEIGHT AND SIZE WILL BE AS SPECIFIED ON THE PLANS.

THIS STANDARD IS APPLICABLE FOR ALL ELECTRICAL SERVICES OTHER THAN 480Y/277.

REFER TO STANDARD MP-2 FOR GROUNDING LUG DETAIL.



**TYPE A (OVERHEAD SERVICE) METAL POLE**