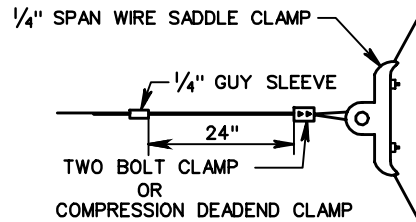


POLE ATTACHMENT



BRIDLE SPAN ATTACHMENT

MINIMUM 16' CLEARANCE FROM HIGHEST POINT OF THE PAVEMENT SURFACE TO LOWEST POINT OF SIGNAL HEAD ASSEMBLY INCLUDING BACKPLATE AND TETHER CLAMP (INCLUDES SIGNAL HEADS ON BRIDLE SPAN).

SPECIFICATION REFERENCE

703

TETHER WIRE DETAILS

VIRGINIA DEPARTMENT OF TRANSPORTATION

VDOT

ROAD AND BRIDGE STANDARDS

REVISION DATE

SHEET 1 OF 1

1304.10