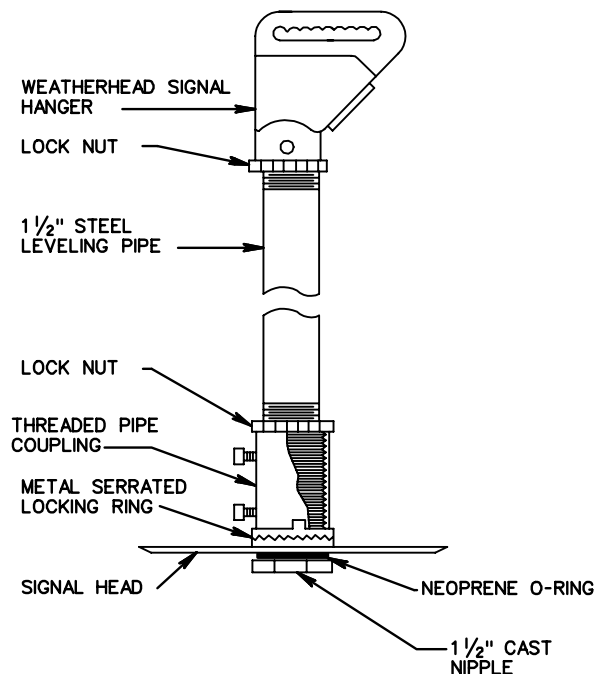
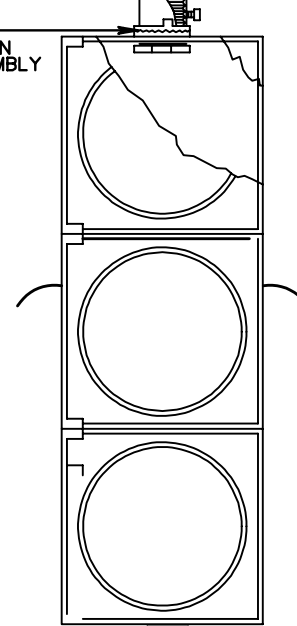


A WATERPROOF SEALANT SHALL BE APPLIED TO THE THREAD AREA ABOVE THE PIPE COUPLING BEFORE THE LOCK NUT IS SCREWED DOWN.

AN EASILY REMOVABLE WATERPROOF SEALANT SHALL BE APPLIED ON THE CONNECTION BETWEEN THE HANGAR ASSEMBLY AND SIGNAL HEAD ASSEMBLY



**NOTES:**

SIGNAL HEADS MOUNTED ON THE SAME SPAN WIRE SHALL BE INSTALLED SO THE BOTTOM SECTIONS ARE ON A LEVEL PLANE OR NO GREATER THAN 12" ABOVE THE BOTTOM OF THE LOWEST SIGNAL HEAD.

SIGNAL HEAD CABLES SHALL BE CONTINUOUS FROM THE CONTROLLER TO THE NEAREST SIGNAL HEAD TO WHICH IT APPLIES EXCEPT CABLE TERMINATIONS MAY BE ALLOWED ON THE POLE TERMINAL STRIP WHEN REQUIRED BY THE PLANS. THE CABLE SHALL ALSO BE CONTINUOUS FROM THE FIRST SIGNAL HEAD TO ANY ADDITIONAL HEADS WITH TERMINATION TERMINALS WITHIN THE SIGNAL HEAD HOUSING.

SPACERS SHALL BE INSTALLED BETWEEN THE EYELET OF THE HANGER ASSEMBLY AND THE INSIDE OF THE SPAN WIRE CLAMP TO ELIMINATE ANY GAP.

WEATHERHEAD SIGNAL HANGER, STEEL LEVELING PIPE AND THREADED PIPE COUPLING SHALL BE GALVANIZED OR PAINTED FLAT BLACK OR YELLOW

SPECIFICATION REFERENCE

703

**SIGNAL HEAD MOUNTING DETAILS**

**SPAN WIRE**

VIRGINIA DEPARTMENT OF TRANSPORTATION

**VDOT**

ROAD AND BRIDGE STANDARDS

REVISION DATE

SHEET 1 OF 1

1303.10