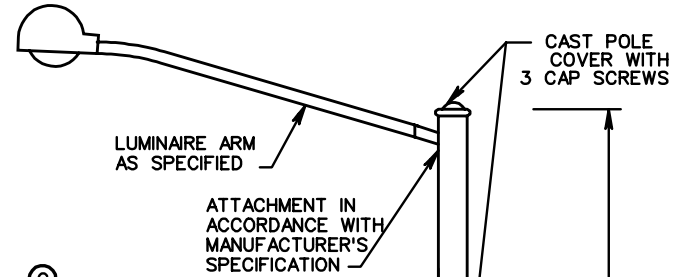
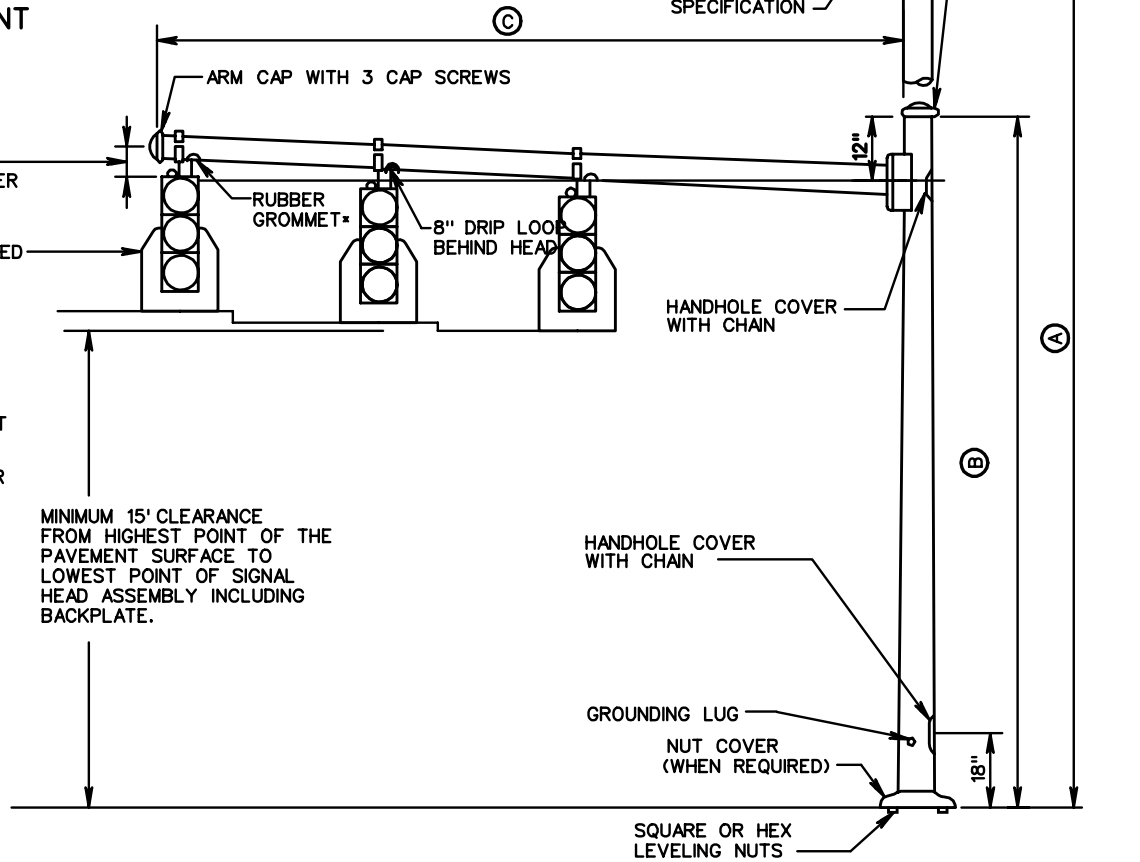


**ARM AND SIGNAL ATTACHMENT**



END OF ARM SHALL NOT DEFLECT BELOW THE HORIZONTAL PLANE NOR EXCEED A 3% RISE AFTER LOADS ARE APPLIED.

BACKPLATES WHEN REQUIRED



**NOTES:**

- (A) POLE SHAFT LENGTH AND MAST ARM MOUNTING HEIGHT SHALL BE AS REQUIRED TO OBTAIN SPECIFIED MOUNTING HEIGHT REQUIRED TO OBTAIN SPECIFIED MOUNTING HEIGHT OF TRAFFIC SIGNAL HEADS AND LUMINAIRES.
- (B) AS REQUIRED BY PLANS (HEIGHT INCLUDES TRANSFORMER BASE WHEN REQUIRED).
- (C) AS REQUIRED BY PLANS.

\* HOLE AND GROMMET FOR SIGNAL WIRING SHALL BE LOCATED ON THE SIDE OF THE ARM DIRECTLY BEHIND THE HANGER ASSEMBLY WHEN STANDARD SM-3 HANGER ASSEMBLIES ARE REQUIRED. SIGNAL WIRING SHALL BE CONCEALED IN THE STANDARD SM-3 HANGER ASSEMBLIES.

THE ALIGNMENT OF THE LUMINAIRE ARM SHALL BE AS SHOWN ON THE PLANS.

REFER TO STANDARD MP-2 FOR GROUNDING LUG DETAIL.

MINIMUM 15' CLEARANCE FROM HIGHEST POINT OF THE PAVEMENT SURFACE TO LOWEST POINT OF SIGNAL HEAD ASSEMBLY INCLUDING BACKPLATE.



ROAD AND BRIDGE STANDARDS

SHEET 1 OF 1

REVISION DATE

1302.10

**SIGNAL POLE DETAILS**  
**MAST ARM AND COMBINATION LUMINAIRE MAST ARM POLE**

VIRGINIA DEPARTMENT OF TRANSPORTATION

SPECIFICATION REFERENCE

700