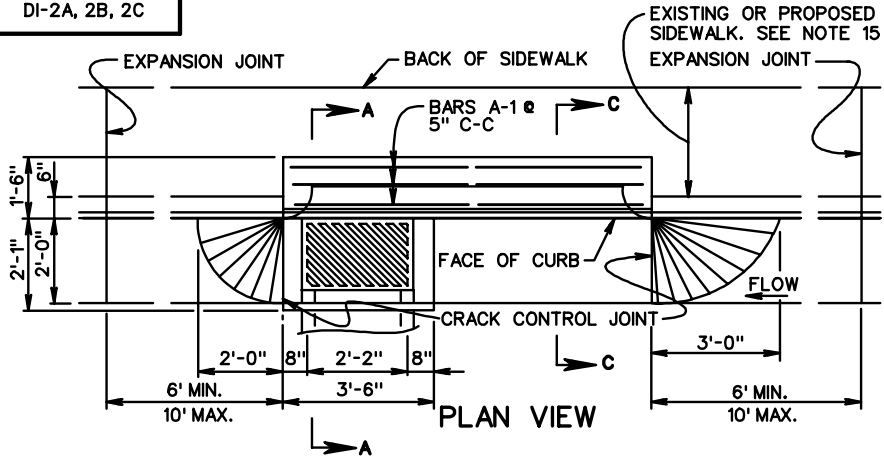
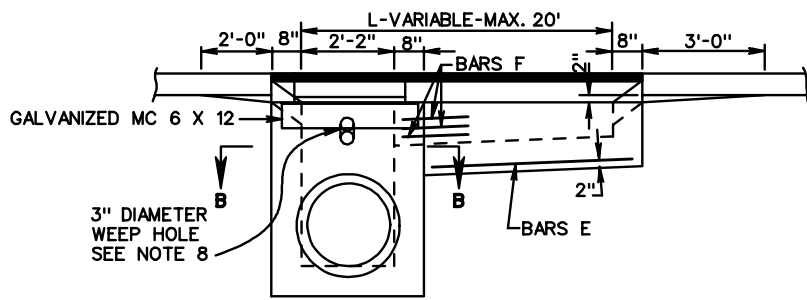


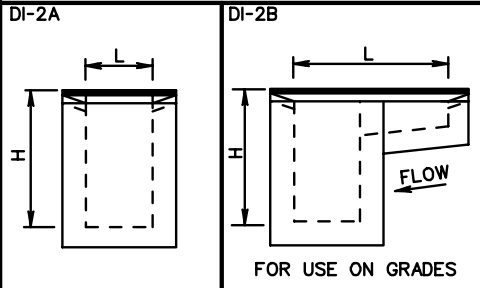
DI-2A, 2B, 2C



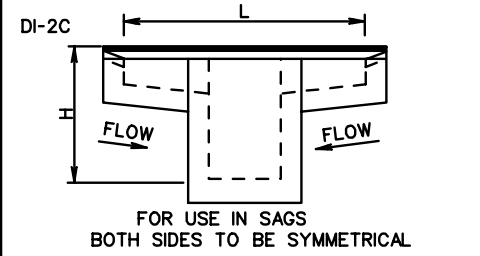
PLAN VIEW



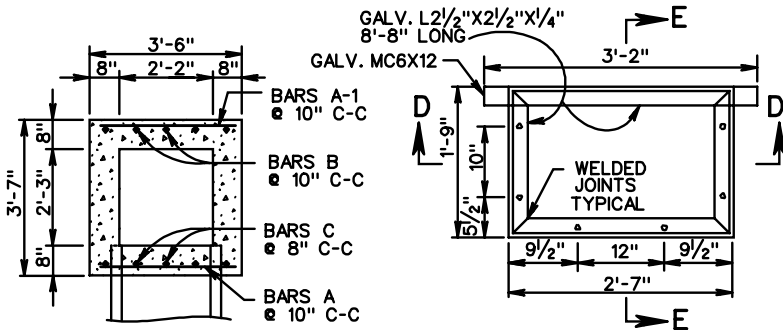
FRONT ELEVATION



FOR USE ON GRADES

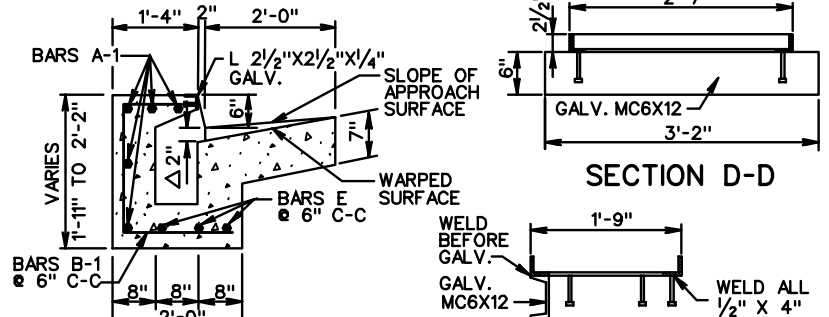


FOR USE IN SAGS  
BOTH SIDES TO BE SYMMETRICAL



SECTION B-B

COLLAR

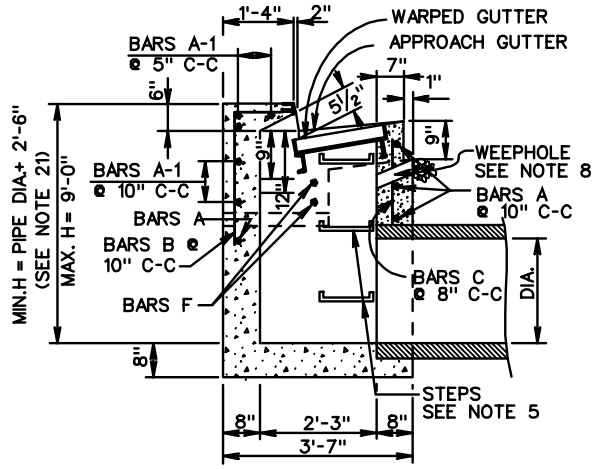


SECTION C-C

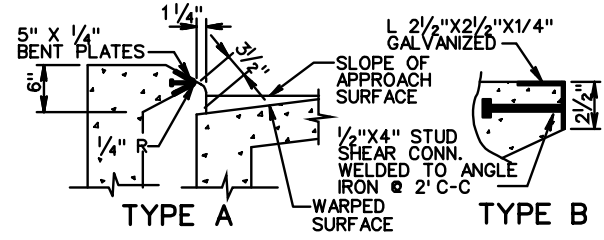
Δ DECREASE TO 1" WHEN INLET IS USED WITH MEDIANS.

SECTION D-D

SECTION E-E



SECTION A-A  
FOR STEP DETAILS SEE STD. ST-1.



NOSE DETAILS

TYPE A NOSE DETAIL SHALL BE USED WITH CG-7 STANDARD.  
TYPE B NOSE DETAIL SHALL BE USED WITH CG-6 STANDARD.  
GALVANIZED PLATE FOR TYPE A TO BE BENT ON AN ANGLE OF 68° 30' AND IS TO BE ANCHORED WITH 1/2" X 4" STUD SHEAR CONNECTORS WELDED TO BENT PLATE AT 2' C-C.

<b>VDOT</b>	
ROAD AND BRIDGE STANDARDS	
SHEET 1 OF 2	REVISION DATE
104.03	

## STANDARD CURB DROP INLET

12" - 24" PIPE: MAXIMUM DEPTH (H) = 9'

VIRGINIA DEPARTMENT OF TRANSPORTATION

SPECIFICATION REFERENCE
233 302