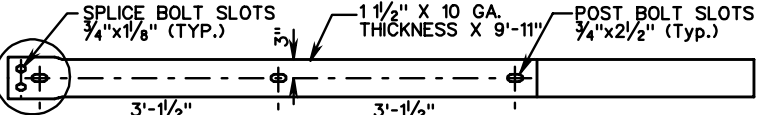
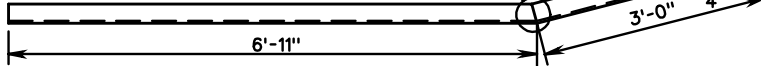
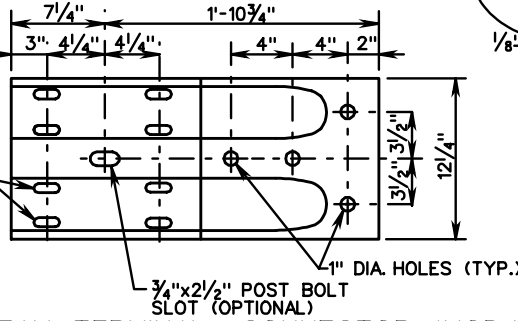
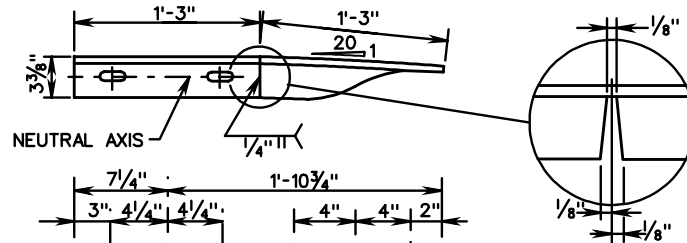


CUT FLANGE, BEND AND WELD. SEE NOTE 1

1/4" TYP. 2 PLACES

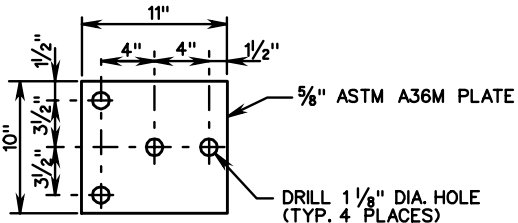
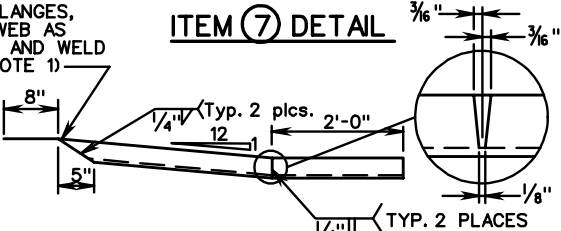


ITEM 7 DETAIL

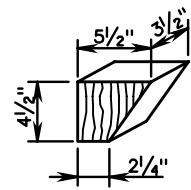


W-BEAM TERMINAL CONNECTOR (MOD.)

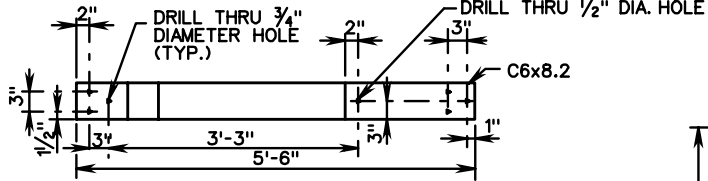
TRIM FLANGES, BEND WEB AS SHOWN AND WELD (SEE NOTE 1)



BEARING PLATE

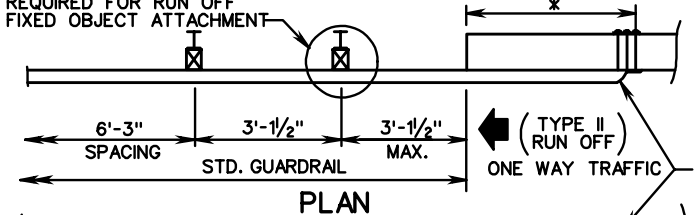


ITEM 10 DETAIL

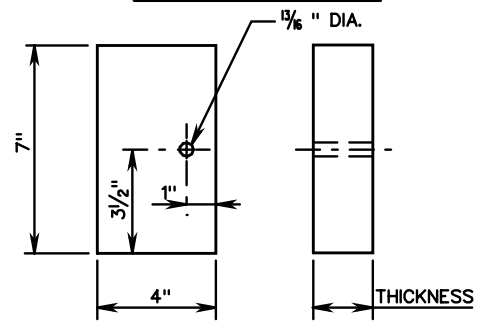


ITEM 8 DETAIL

INDICATES EXTRA POST REQUIRED FOR RUN OFF FIXED OBJECT ATTACHMENT



ELEVATION



RUBRAIL BLOCKOUT DETAIL

STEEL POSTS RUBRAIL BLOCKOUTS 7" X 4" X THICKNESS
WOOD POSTS RUBRAIL BLOCKOUTS 7" X 4" X THICKNESS

POST	THICKNESS
1	4 1/4"
2	3 1/4"
3	2"
4	1"

POST	THICKNESS
1	6 1/4"
2	4 5/8"
3	3 1/8"
4	1 1/2"

STD. W-BEAM TERMINAL CONNECTOR

* AS NEEDED TO ATTACH W-BEAM TERMINAL CONNECTOR.

NOTES:
1. CAN BE FIELD CUT AND BENT USING HEAT. IF SHOP CUT AND BENT, RIGHT HAND OR LEFT HAND MUST BE SPECIFIED DEPENDING ON WHICH SIDE OF THE ROADWAY THE TRANSITION IS USED.



ROAD AND BRIDGE STANDARDS

W-BEAM GUARDRAIL - FIXED OBJECT ATTACHMENT

SPECIFICATION REFERENCE

SHEET 3 OF 3

REVISION DATE

RUBRAIL AND HARDWARE DETAILS

505

501.30

VIRGINIA DEPARTMENT OF TRANSPORTATION