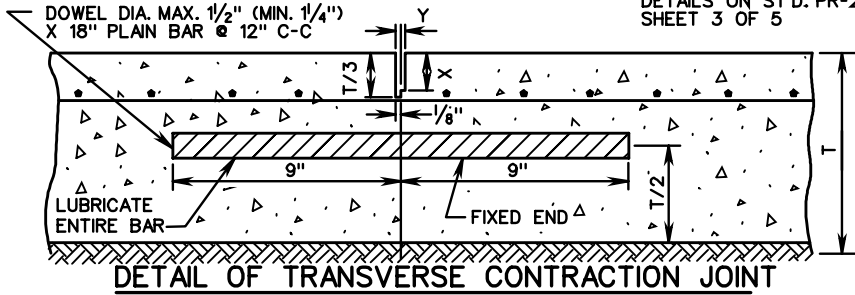


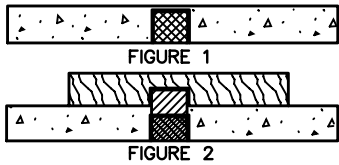
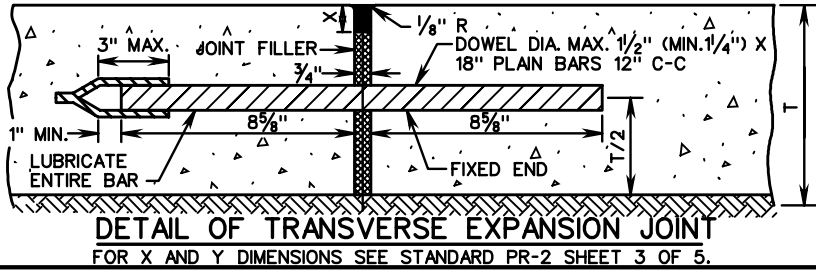
PR-2

FOR X AND Y DIM. SEE
ST'D. PR-2 SHEET 3 OF 5

⊗ JT. SEALANTS TO BE IN ACCORDANCE WITH DETAILS ON ST'D. PR-2 SHEET 3 OF 5

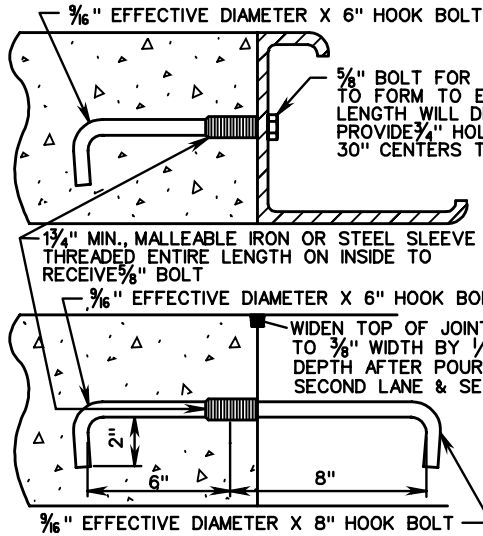


⊗ SEAL WITH AN APPROVED JOINT SEALANT. A BAND BREAKING MATERIAL IS TO BE PROVIDED BETWEEN THE JOINT FILLER AND SEAL.



SMOOTH SURFACE TO BE STEEL TROWELED 8" IN FROM THE EDGE OF PAVEMENT EVERY 500', AND STATION NUMBER STAMPED INTO IT. THE DATE IS TO BE SHOWN IN A SIMILAR MANNER AT THE BEGINNING OF EACH DAY'S POUR.

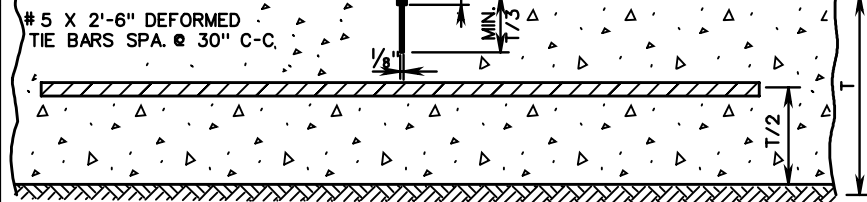
BOTH OUTSIDE EDGES OF DIVIDED HIGHWAY TO BE STAMPED. ONE EDGE OF UNDIVIDED HIGHWAYS WHERE FEASIBLE.



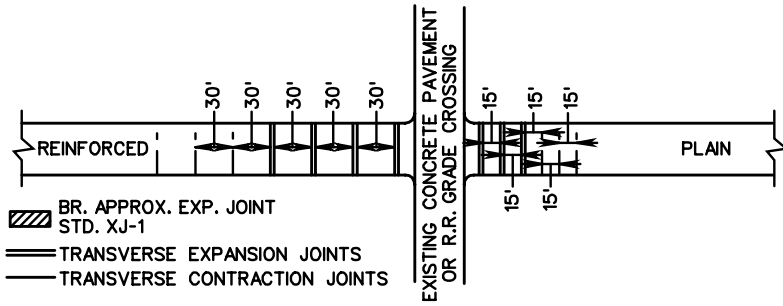
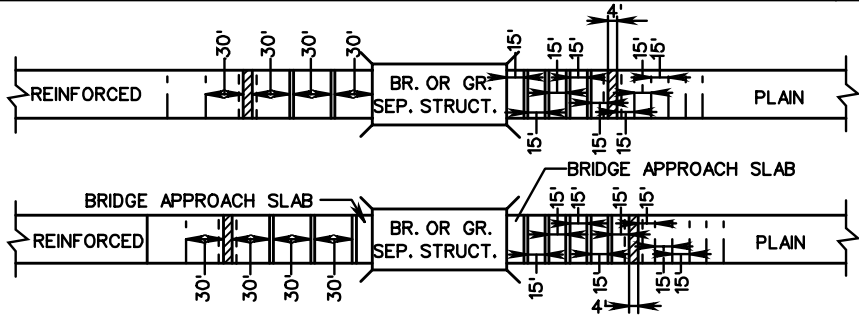
NOTE:
3/8" EFFECTIVE DIAMETER HOOK BOLTS TO BE 3/8" DIAMETER STOCK FOR ROLLED THREADS AND 5/8" DIAMETER STOCK FOR CUT THREADS O.D. OF THREADED PORTION TO BE 5/8".
ANY SIMILAR DEVICE OF EQUAL STRENGTH WILL BE ACCEPTED IF APPROVED BY THE ENGINEER.

NOTE:
#5 X 2'-6" DEFORMED TIE BARS AT 30" C-C MAY BE USED IN LIEU OF HOOK BOLTS.

WIDEN TOP OF GROOVE TO 3/8" WIDTH BY 1/2" DEPTH & SEAL IF ASPHALT TOP NOT USED.



GRADE 40 TIE BARS MAY BE PRE-BENT AND STRAIGHTENED ONE TIME ONLY FOR MULTI-LANE CONSTRUCTION IN ACCORDANCE WITH SPECIFICATIONS.



▨ BR. APPROX. EXP. JOINT
STD. XJ-1
— TRANSVERSE EXPANSION JOINTS
— TRANSVERSE CONTRACTION JOINTS



ROAD AND BRIDGE STANDARDS

SHEET 2 OF 5

REVISION DATE

301.02

PLAIN AND REINFORCED CONCRETE PAVEMENT
(SHOWING REINFORCEMENT, LONGITUDINAL AND TRANSVERSE JOINTS)

VIRGINIA DEPARTMENT OF TRANSPORTATION

SPECIFICATION REFERENCE

316