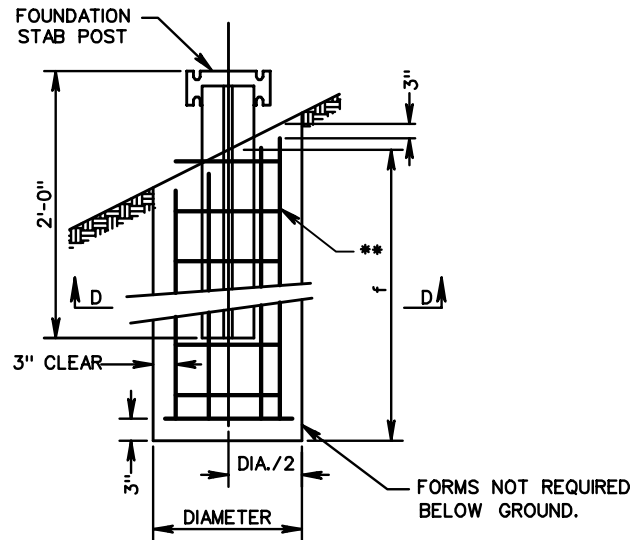
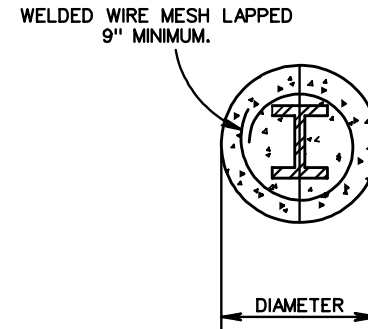


FOUNDATION

ELEVATION



SECTION D-D



\*\* 6 x 6 - MW5.5 x MW5.5  
OR  
6 X 6 - 2/2 WELDED WIRE MESH  
[TWO OFFSET LAYERS REQUIRED]

SIGN POST AND FOUNDATION DETAILS

STRUCTURE TYPE	SIGN PANEL DIMENSIONS		SIGN POST	* POST LENGTH DIMENSIONS SLOPE 3:1 TO 2:1	FOUNDATION DIMENSIONS		WELDED WIRE MESH		STEEL BASE PLATE T (THICKNESS)
	W	H			f	DIAMETER	LENGTH	SQ. FT.	
VA-A	3'	3'	S3 x 5.7	12'-3"	3'-0"	1'-0"	2'-6"	5	1/2"
VA-B	4'	4'	W4 x 13	12'-3"	4'-6"	1'-9"	4'-4"	20	1"
VA-C	4'	5'		13'-3"					
VA-D	5'	3'		12'-9"					
VA-E	6'	5'		13'-9"					
VA-F	4'	-		13'-9"					
VA-G	5'	-		13'-0"					
VA-K	4'	5'		17'-3"					
VA-K	4'	4'		-					
VA-L	6'	6'		14'-6"					
VA-M	5'	5'		13'-9"					
VA-A2	6'	3'	W6 x 12	13'-9"					

\* ALL POST LENGTHS SHALL BE FIELD CHECKED BY CONTRACTOR PRIOR TO FABRICATION.

SPECIFICATION REFERENCE
700

VA SIGN STRUCTURE  
INSTALLATION DETAILS  
VIRGINIA DEPARTMENT OF TRANSPORTATION

VDOT ROAD AND BRIDGE STANDARDS	
REVISION DATE	SHEET 2 OF 4
1322.11	