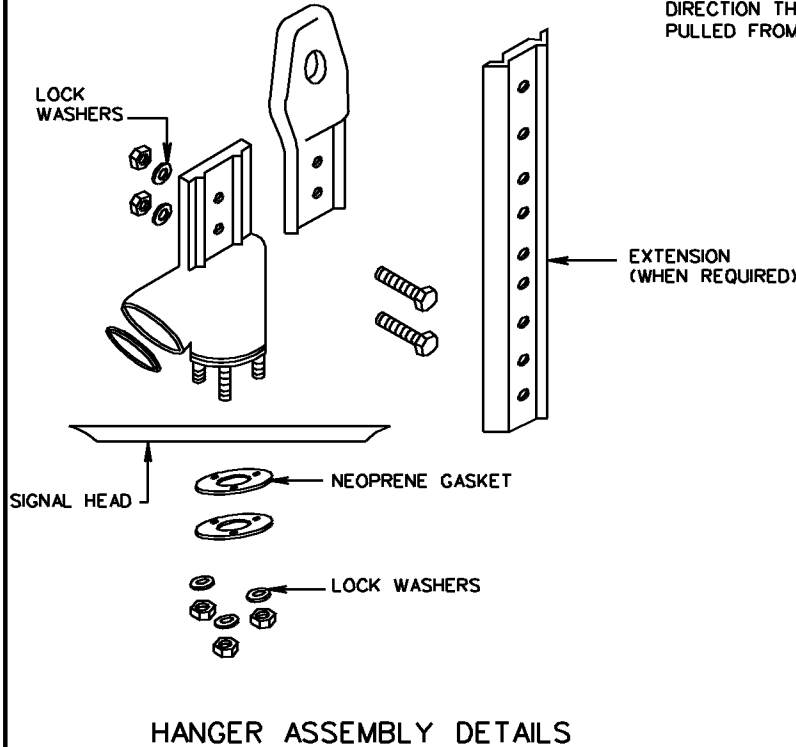
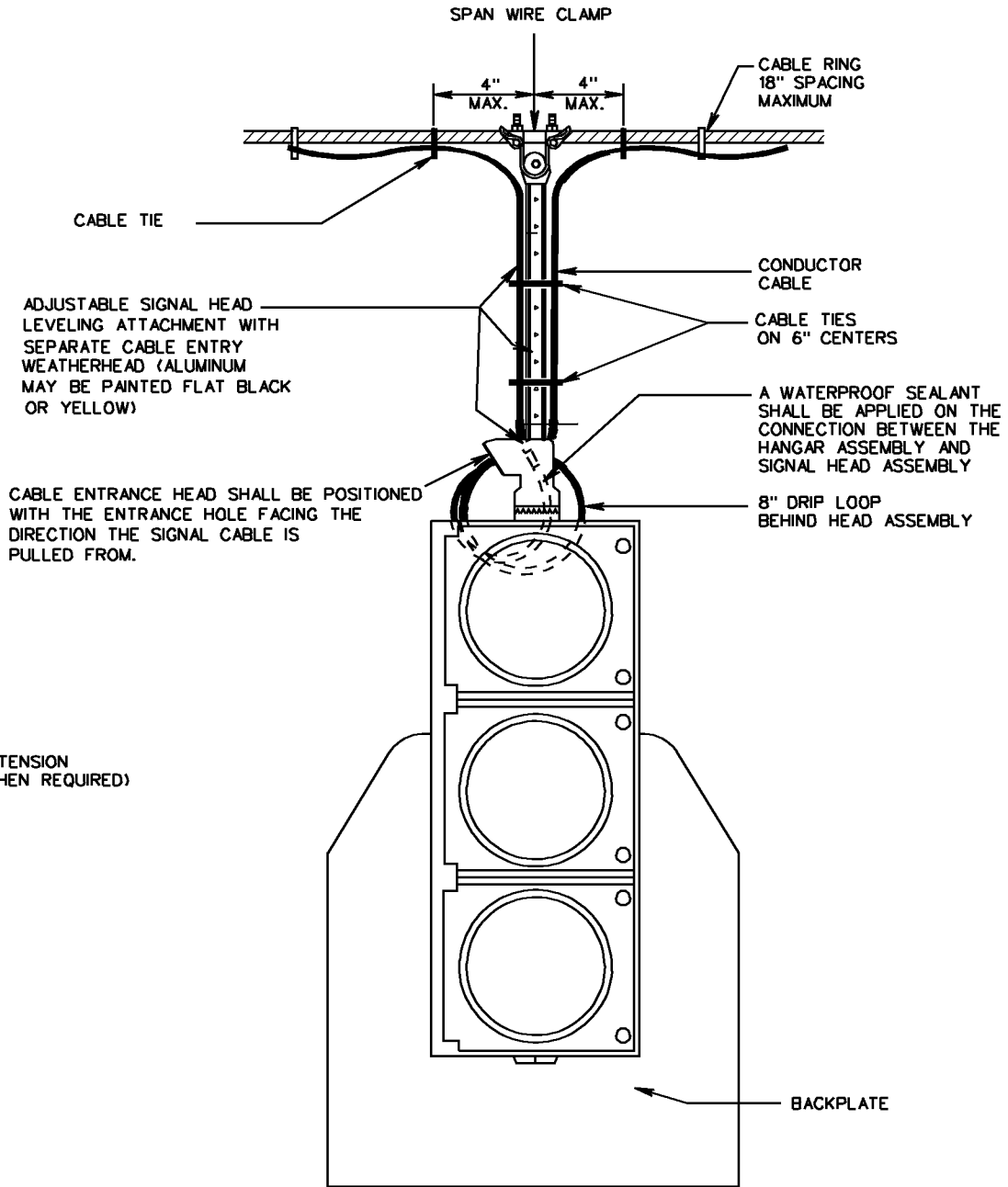


NOTES:

SIGNAL HEADS MOUNTED ON THE SAME SPAN WIRE SHALL BE INSTALLED SO THE BOTTOM SECTIONS ARE ON A LEVEL PLANE OR NO GREATER THAN 12" ABOVE THE BOTTOM OF THE LOWEST SIGNAL HEAD.

SIGNAL HEAD CABLES SHALL BE CONTINUOUS FROM THE CONTROLLER TO THE NEAREST SIGNAL HEAD TO WHICH IT APPLIES EXCEPT CABLE TERMINATIONS MAY BE ALLOWED ON THE POLE TERMINAL STRIP WHEN REQUIRED BY THE PLANS. THE CABLE SHALL ALSO BE CONTINUOUS FROM THE FIRST SIGNAL HEAD TO ANY ADDITIONAL HEADS WITH TERMINATION ON THE TERMINALS WITHIN THE SIGNAL HEAD HOUSING. ALL MISCELLANEOUS HARDWARE SHALL BE STAINLESS STEEL.

SPACERS SHALL BE INSTALLED BETWEEN THE EYELET OF THE HANGER ASSEMBLY AND THE INSIDE OF THE SPAN WIRE CLAMP TO ELIMINATE ANY GAP.



SIGNAL HEAD MOUNTING DETAILS
SPAN WIRE

VIRGINIA DEPARTMENT OF TRANSPORTATION

SPECIFICATION
REFERENCE

703

VDOT
ROAD AND BRIDGE STANDARDS

SHEET 1 OF 1
1303.20

REVISION DATE
06-15-2009