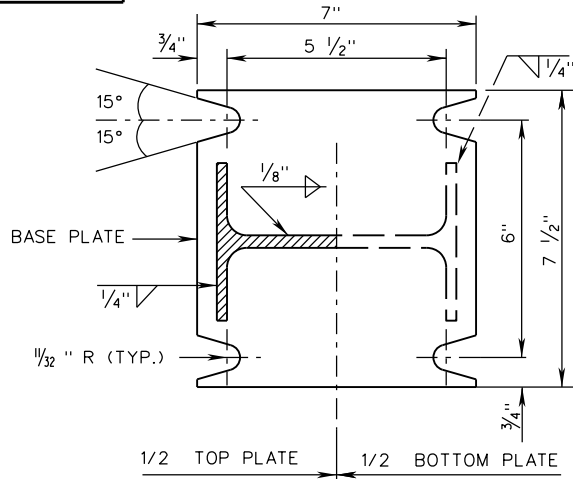
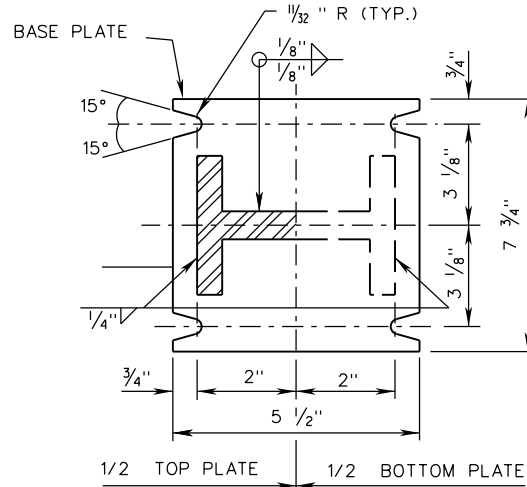


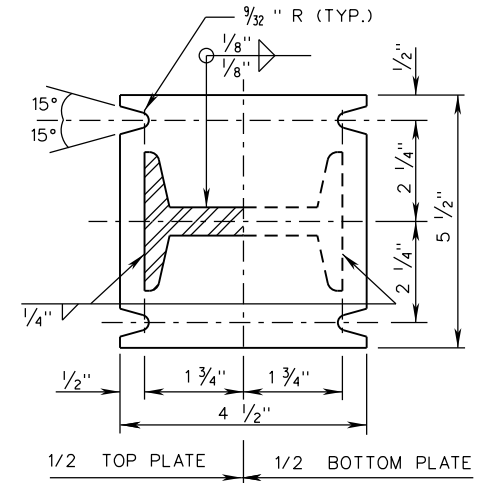
SSP-VA



SECTION A-A
FOR W6 x 12 POST



SECTION A-A
FOR W4 x 13 POST



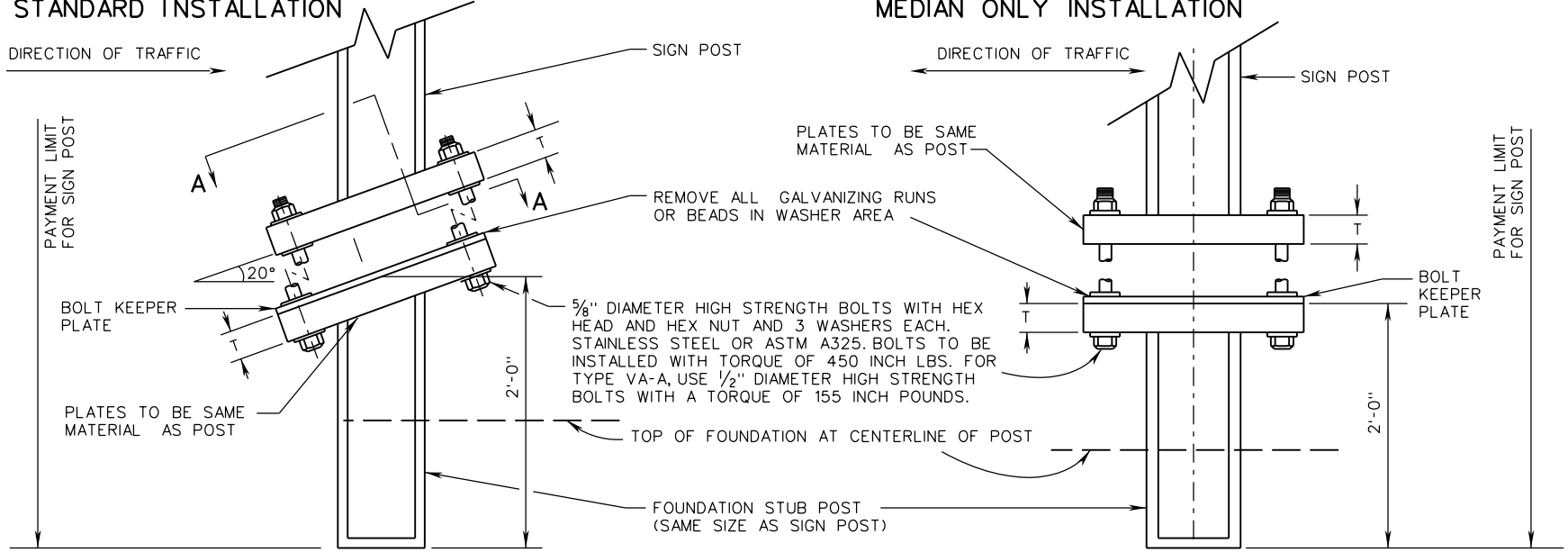
SECTION A-A
FOR S3 x 5.7 POST

STANDARD INSTALLATION

DIRECTION OF TRAFFIC

MEDIAN ONLY INSTALLATION

DIRECTION OF TRAFFIC



A COPY OF THE ORIGINAL SEALED AND SIGNED DRAWING IS ON FILE IN THE CENTRAL OFFICE.

VA SIGN STRUCTURE
INSTALLATION DETAILS

VIRGINIA DEPARTMENT OF TRANSPORTATION

SPECIFICATION
REFERENCE

700



ROAD AND BRIDGE STANDARDS

SHEET 3 OF 4

REVISION DATE

1322.12

01/15