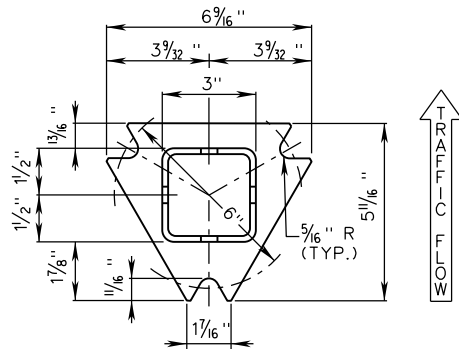


SLIP BASE BREAKAWAY DETAIL

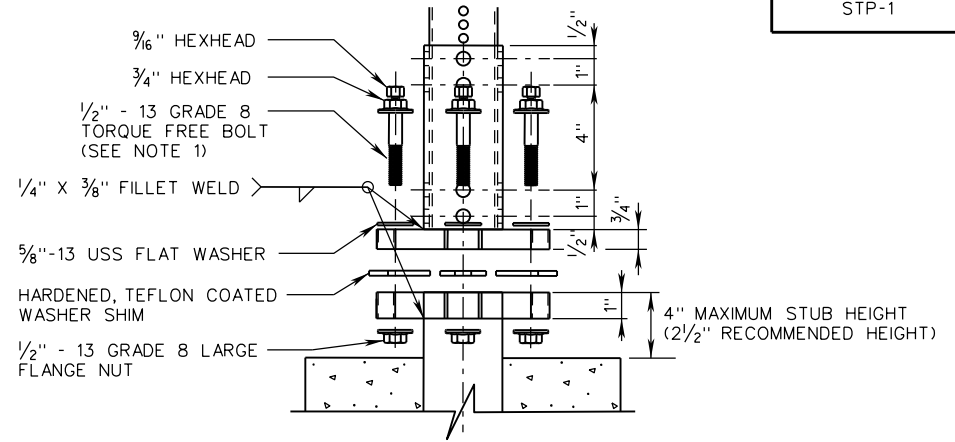
MATERIALS:
 TUBE RECEIVER -
 3" x 3" x 7 GAUGE
 ASTM A500
 GRADE B TUBE
 PLATE - ASTM
 A572 GRADE 50



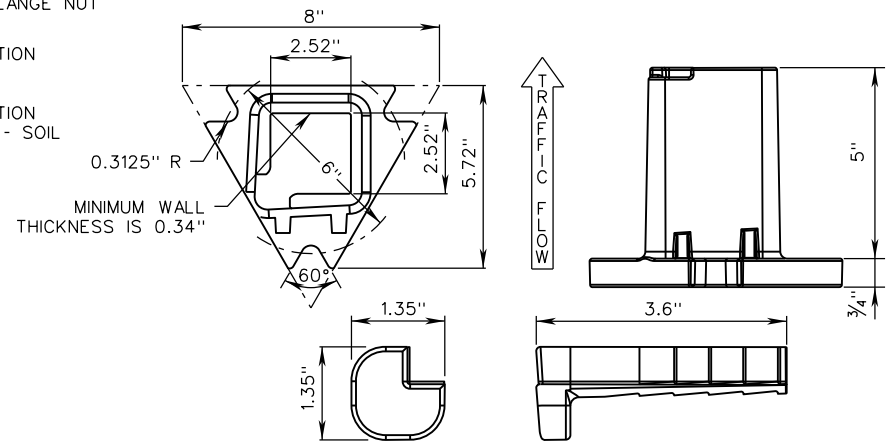
TOP POST RECEIVER/
 FOR 2 1/2" SQUARE POST

NOTES:

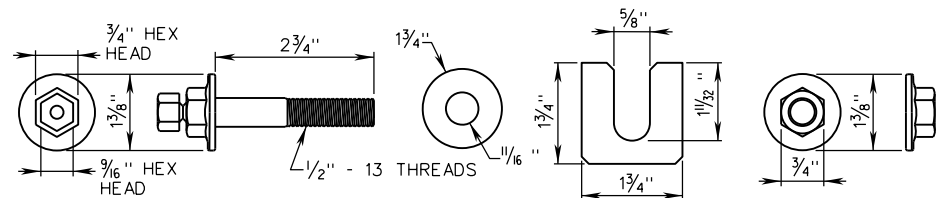
1. TIGHTEN THE TORQUE FREE BOLT USING THE LARGER 3/4" HEX HEAD, THEN LOOSEN THE BOLTS BY THREE COMPLETE TURNS USING THE 3/4" HEX HEAD. RETIGHTEN EACH TORQUE BOLT USING THE SMALLER 5/16" HEX HEAD UNTIL THE 5/16" HEX HEAD TWISTS OFF.



SLIP BASE BREAKAWAY PROFILE DETAIL



REDI-TORQUE MULTI-DIRECTIONAL BOLT ON SAE1035 STEEL FORGING SLIP BASE TOP FOR 2 1/2" SQUARE POST WITH CAST IRON LOCKING WEDGE



TORQUE FREE MATCH PLATE HARDWARE

SPECIFICATION REFERENCE

700

A COPY OF THE ORIGINAL SEALED AND SIGNED DRAWING IS ON FILE IN THE CENTRAL OFFICE.

SQUARE TUBE SIGN POST
 FOUNDATION TYPE B AND C DETAILS

VIRGINIA DEPARTMENT OF TRANSPORTATION

VDOT

ROAD AND BRIDGE STANDARDS

REVISION DATE

NEW 01/15

SHEET 7 OF 12

1321.16