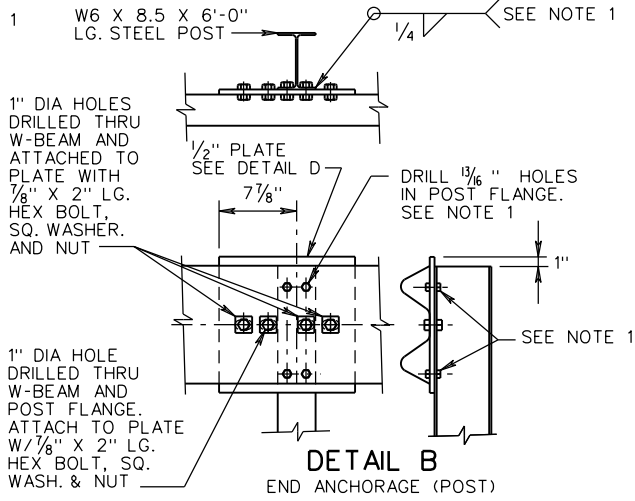
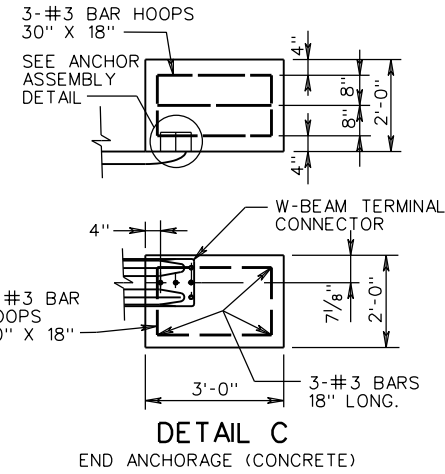


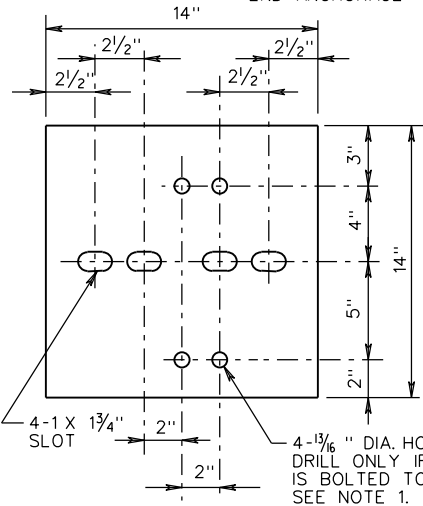
DETAIL A
END ANCHORAGE



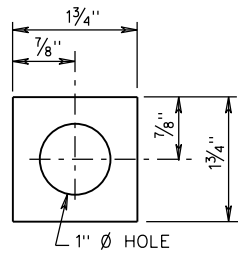
DETAIL B
END ANCHORAGE (POST)



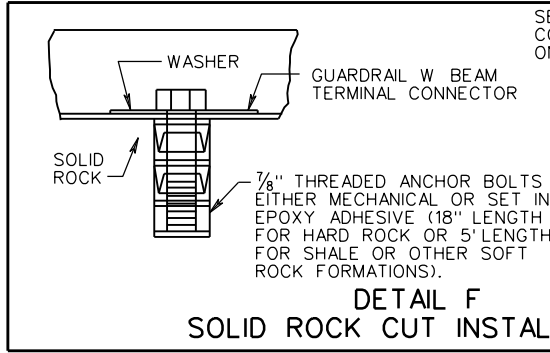
DETAIL C
END ANCHORAGE (CONCRETE)



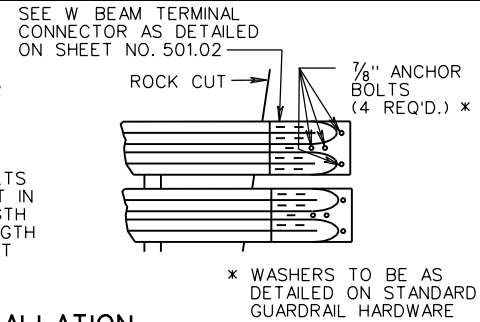
DETAIL D
1/2" THICK STEEL PLATE



DETAIL E
3/16" THICK SQUARE WASHER

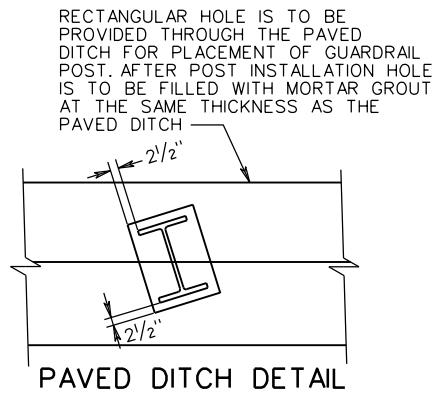


DETAIL F
SOLID ROCK CUT INSTALLATION

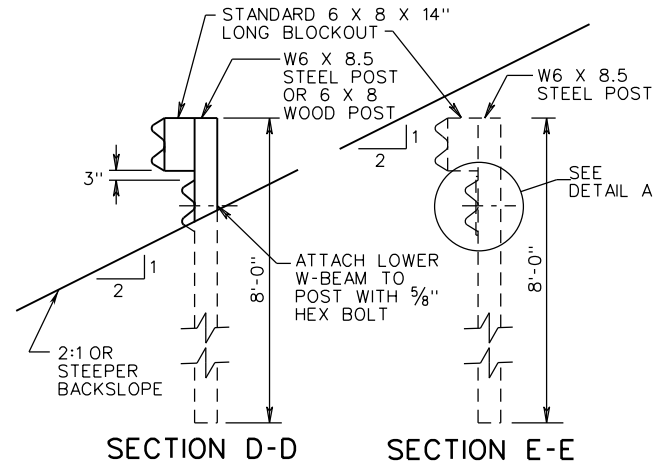


* WASHERS TO BE AS DETAILED ON STANDARD GUARDRAIL HARDWARE

- NOTE:**
- 1/2" STEEL PLATE MAY BE WELDED OR BOLTED TO POST. IF PLATE IS BOLTED TO POST USE 4 - 3/8" X 1 1/2" LG. HEX HEAD BOLTS W/ HEX NUTS. IF PLATE IS WELDED TO POST DO NOT DRILL 1 3/8" HOLES IN PLATE OR IN POST FLANGES.
 - CONCRETE END ANCHORAGE MAY BE USED IN PLACE OF STEEL POST AT 8'-0" OFFSET.



PAVED DITCH DETAIL



SECTION D-D

SECTION E-E



ROAD AND BRIDGE STANDARDS

A COPY OF THE ORIGINAL SEALED AND SIGNED DRAWING IS ON FILE IN THE CENTRAL OFFICE.

TERMINAL TREATMENT FOR W-BEAM GUARDRAIL

SPECIFICATION REFERENCE

SHEET 2 OF 2

REVISION DATE

221

501.10

7/12

505