

PR-4

A

NOTES:

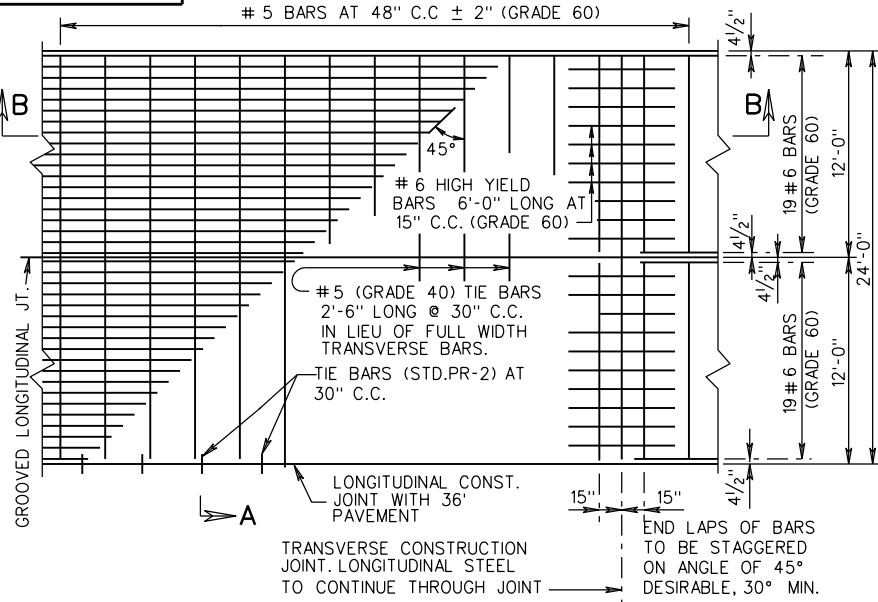
HOOK BOLTS OR TIE BARS ARE TO BE PLACED IN THE SAME HORIZONTAL PLANE AS #5 TRANSVERSE BARS. WHERE NECESSARY ADJUST THE LOCATION OF HOOK BOLTS OR TIE BARS TO A 2 1/2" MINIMUM CLEARANCE BETWEEN HOOK BOLTS OR TIE BARS AND TRANSVERSE BARS.

TRANSVERSE CONSTRUCTION JOINT BARS ARE TO BE PLACED IN THE SAME HORIZONTAL PLANE AS #6 LONGITUDINAL BARS.

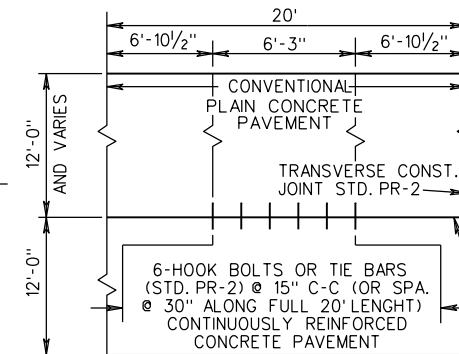
#6 LONGITUDINAL BARS ARE TO BE LAPPED AND TIED IN THE SAME HORIZONTAL PLANE.

FOR 36" WIDTH PAVEMENT USE SINGLE 12' LANES WITH 2 LONGITUDINAL CONSTRUCTION JOINTS OR 12' AND 24' LANES WITH ONE LONGITUDINAL CONSTRUCTION JOINT AND ONE GROOVED LONGITUDINAL JOINT. TRANSVERSE BARS SHALL NOT EXTEND THROUGH LONGITUDINAL CONSTRUCTION JOINTS, BUT SHALL EXTEND FULL LENGTH (23'-9") FOR GROOVED LONGITUDINAL JOINTS.

255



PLAN VIEW

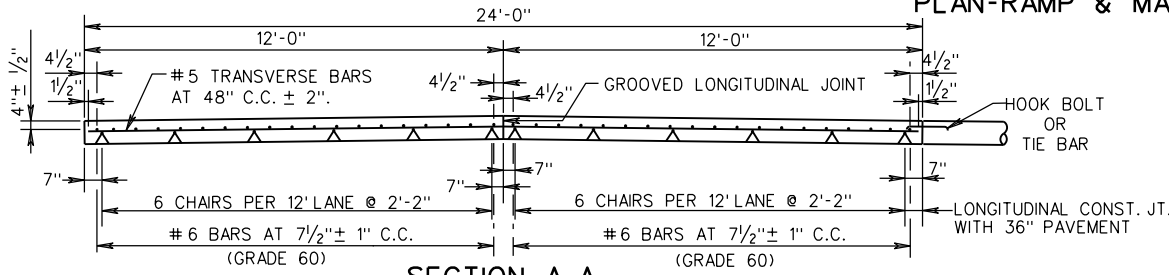


PLAN-RAMP & MAIN LINE CONNECTION

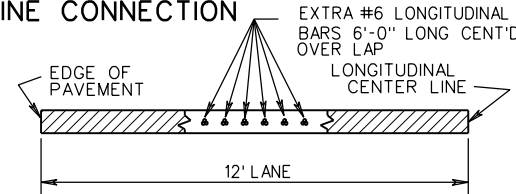
SMOOTH SURFACE TO BE STEEL TROWELED 8" IN FROM THE EDGE OF PAVEMENT EVERY 500 FEET, AND STATION NUMBER STAMPED ON IT.

THE DATE IS TO BE SHOWN IN A SIMILAR MANNER AT THE BEGINNING OF EACH DAYS POUR.

BOTH OUTSIDE EDGES OF DIVIDED HIGHWAY TO BE STAMPED. ONE EDGE OF UNDIVIDED HIGHWAY WHERE FEASIBLE. (TRAVEL LANE)



SECTION A-A



SECTION C-C

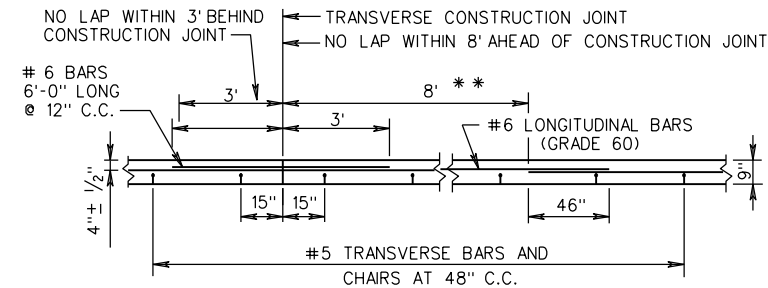
EXTRA #6 LONGITUDINAL BARS 6'-0" LONG CENT'D. OVER LAP

LONGITUDINAL CENTER LINE

EDGE OF PAVEMENT

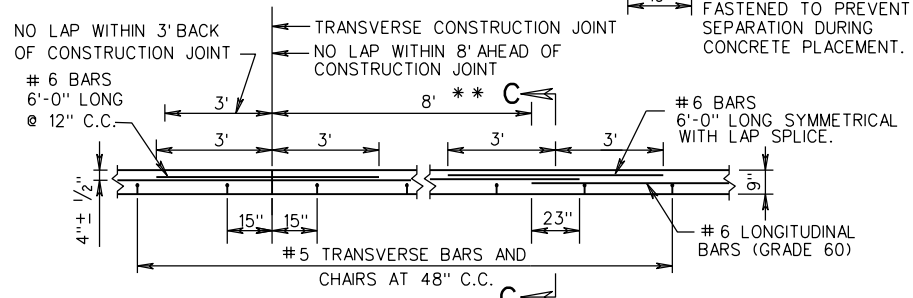
12' LANE

TYPICAL LONGITUDINAL LAP



SECTION B-B
DOUBLE LAP METHOD

** DOUBLE LAP REQUIREMENT (46") AND THE EXTRA BAR METHOD APPLY ONLY TO LAPS FALLING WITHIN AN AREA OF 8' BEYOND THE CONSTRUCTION JOINT.



SECTION B-B
EXTRA BAR METHOD



ROAD AND BRIDGE STANDARDS

A COPY OF THE ORIGINAL SEALED AND SIGNED DRAWING IS ON FILE IN THE CENTRAL OFFICE.

9" THICK CONTINUOUSLY REINFORCED CONC. PAVE.
(STEEL BAR REINFORCEMENT)

SPECIFICATION REFERENCE

SHEET 1 OF 3

REVISION DATE

301.10

7/12

VIRGINIA DEPARTMENT OF TRANSPORTATION

316