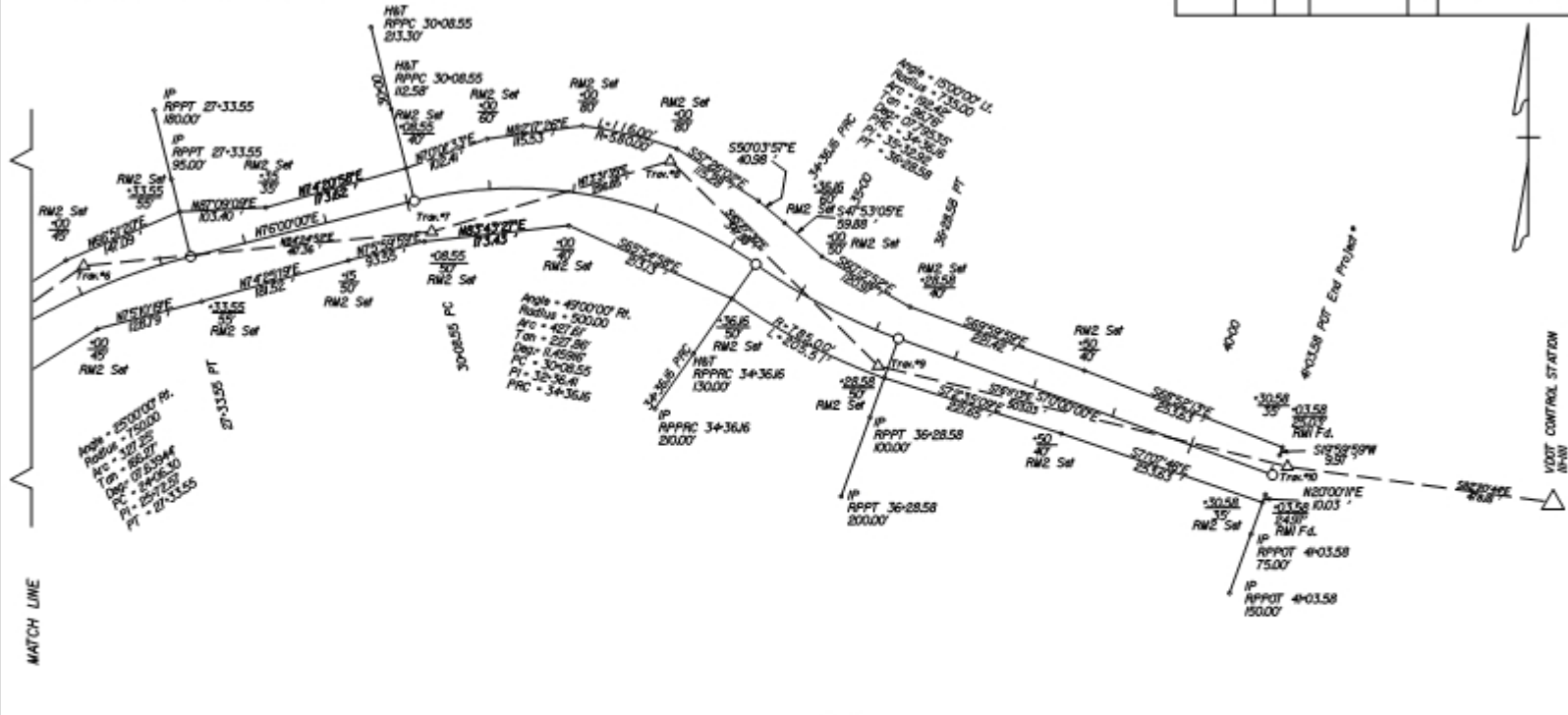


Note: To Convert To State Plane Coordinates:  $445.83$  Meter Values To U.S. G.T. Project Coordinates.  
 1. Reduce The Easting 2.5 Meter Values and The South and North Zone Readings by  $1$  and 2 Meter Respectively.  
 2. Multiply These Values by The Combined Scale and Direction Factor:  $1.1111$  For The County.  
 A Reverse of This Procedure Will Transform U.S.G.T. Project Coordinates to  $445.83$  Meter Values.

SAMPLE

DESIGN FEATURES RELATIVE TO CONSTRUCTION OR TO REGULATION AND CONTROL OF TRAFFIC MAY BE SUBJECT TO CHANGE AS DEEMED NECESSARY BY THE DEPARTMENT.

NO.	DATE	BY	REVISION	DESCRIPTION
1	11/15/00	ML	150	0190-037-104-KH-C501

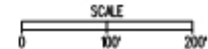


I, \_\_\_\_\_, A Licensed Land Surveyor  
 in the Commonwealth of Virginia hereby state this R/W Drawing  
 represents an On The Ground Field Survey conducted under  
 my direct supervision. Each Right Of Way Monument was either  
 set by me or the location was verified by me. The stations  
 and offsets shown on this sketch correctly show the  
 relationship between the monuments and the construction  
 baseline.



Licensed Land Surveyor Reg.\* Date

FIGURE 4



NO.	DATE	BY	REVISION	DESCRIPTION