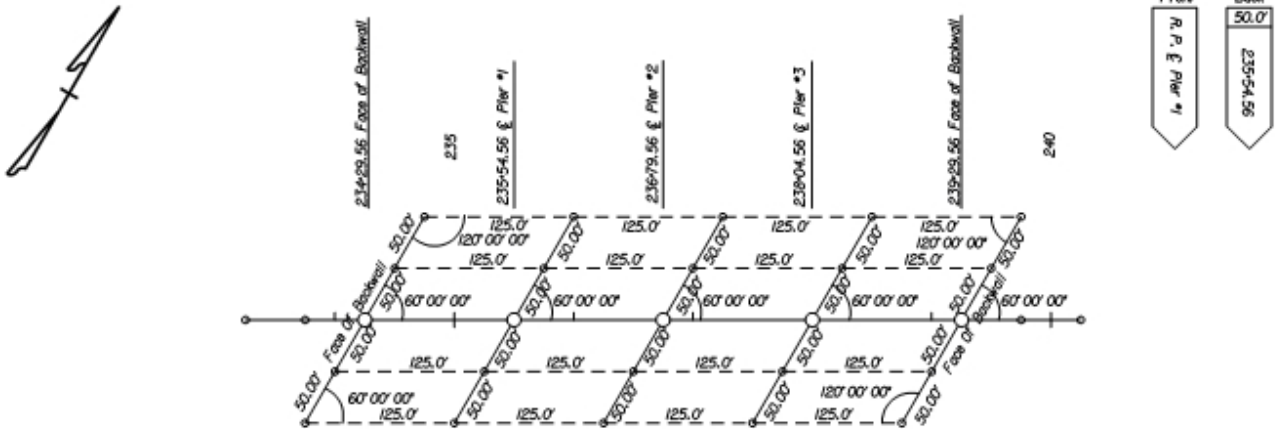


SAMPLE

Benchmark #1 - 3 Nails Set In The Base Of A 36" Oak, 85' Lt. Of Sta. 232+00 Construction Baseline
Elevation - 433.98

Benchmark #2 - Railroad Spike Set In The Top Of A 48" Stump, 105' Rt. Sta. 240+50 Construction Baseline
Elevation - 429.22



Notes:

1. At Least Two Of Feet Points Shall Be Set On Each Side Of The Abutments And Piers.
2. Offsets When Possible Will Be Set Equal Distance From Backwall And Piers.
3. Angles And Distances Shall Be Checked At Ends Of All Offset Lines
4. A Minimum Of Two Benchmarks Shall Be In The Immediate Vicinity Of The Bridge
The Descriptions And Station And Offset From The Construction Baseline Shall Be Shown On
The Bridge Stake Out Sketch
5. All Reestablishing Of Face Of Backwall And Centerlines Of Piers Will Be Intersection Only.
Distances Are Provided For Checking Purposes Only

Certification

I, Licensed Land Surveyor, Hereby State The Stake Out Of Bridge * _____, Project * _____
Was Conducted Under My Direct Supervision And This Sketch Correctly Represents The Location Of
All Offset Points Staked In The Field.

Land Surveyor Reg. # Date

FIGURE 3

