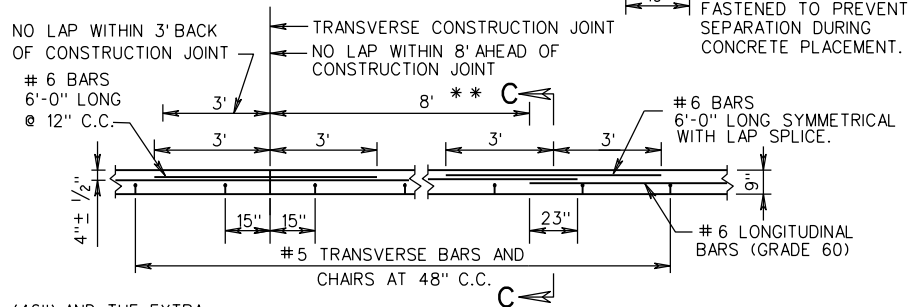
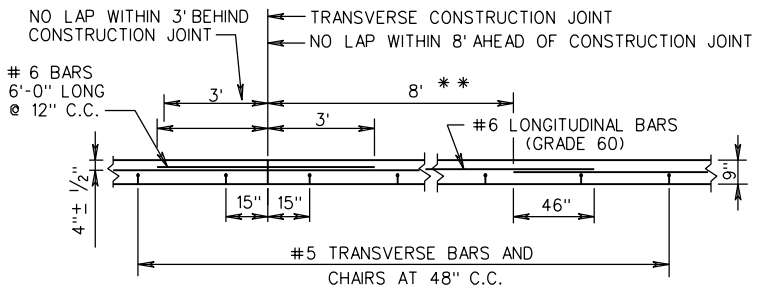
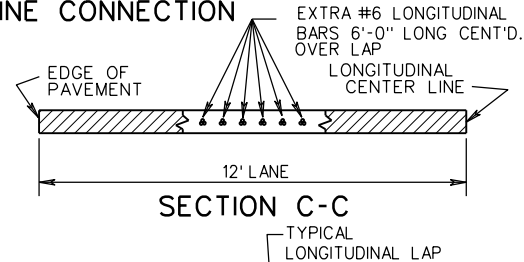
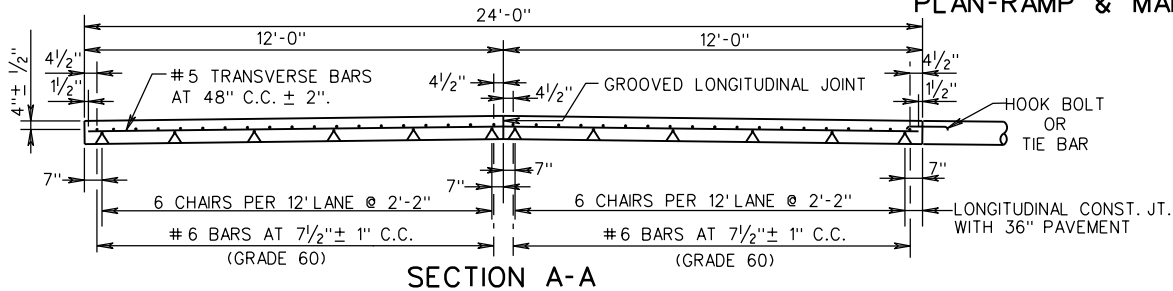


PLAN VIEW

PLAN-RAMP & MAIN LINE CONNECTION



** DOUBLE LAP REQUIREMENT (46") AND THE EXTRA BAR METHOD APPLY ONLY TO LAPS FALLING WITHIN AN AREA OF 8' BEYOND THE CONSTRUCTION JOINT.

VDOT	
ROAD AND BRIDGE STANDARDS	
SHEET 1 OF 3	REVISION DATE
301.10	7/12

A COPY OF THE ORIGINAL SEALED AND SIGNED DRAWING IS ON FILE IN THE CENTRAL OFFICE.

9" THICK CONTINUOUSLY REINFORCED CONC. PAVE.
(STEEL BAR REINFORCEMENT)

VIRGINIA DEPARTMENT OF TRANSPORTATION

SPECIFICATION REFERENCE
316